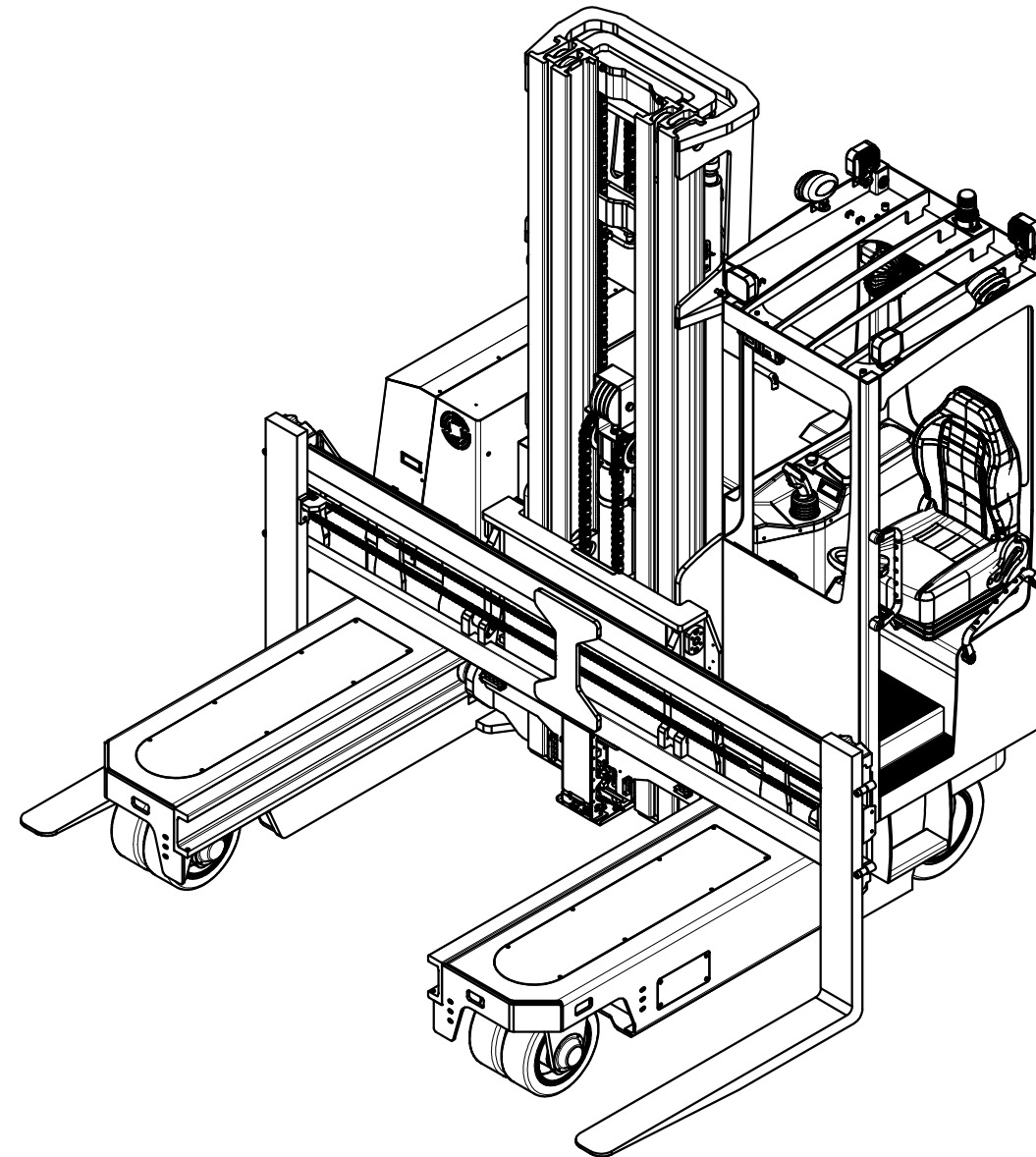


MiMA® **米玛**®

MATERIAL HANDLING EQUIPMENT
DESIGNER & MANUFACTURER

PARTS LIST

MQC35 MULTI-
DIRECTIONAL
FORKLIFT TRUCK



BANYITONG SCIENCE&TECHNOLOGY DEVELOPING CO.,LTD.

INSTRUCTION

- 1.This parts list include the main parts of MQC35 multi-directional forklift truck
- 2.When user purchase the parts, please write clearly the model and series No. of the electric forklift,the item No., name and quantity of the required part;
- 3.To ensure quality,please use our parts when repair and change the parts;
- 4.We'll improve or change some part to improve the quality of the forklift, this parts list can't modify one by one on time, thanks for your understanding. Please contact with our sales manager or distributor for details.

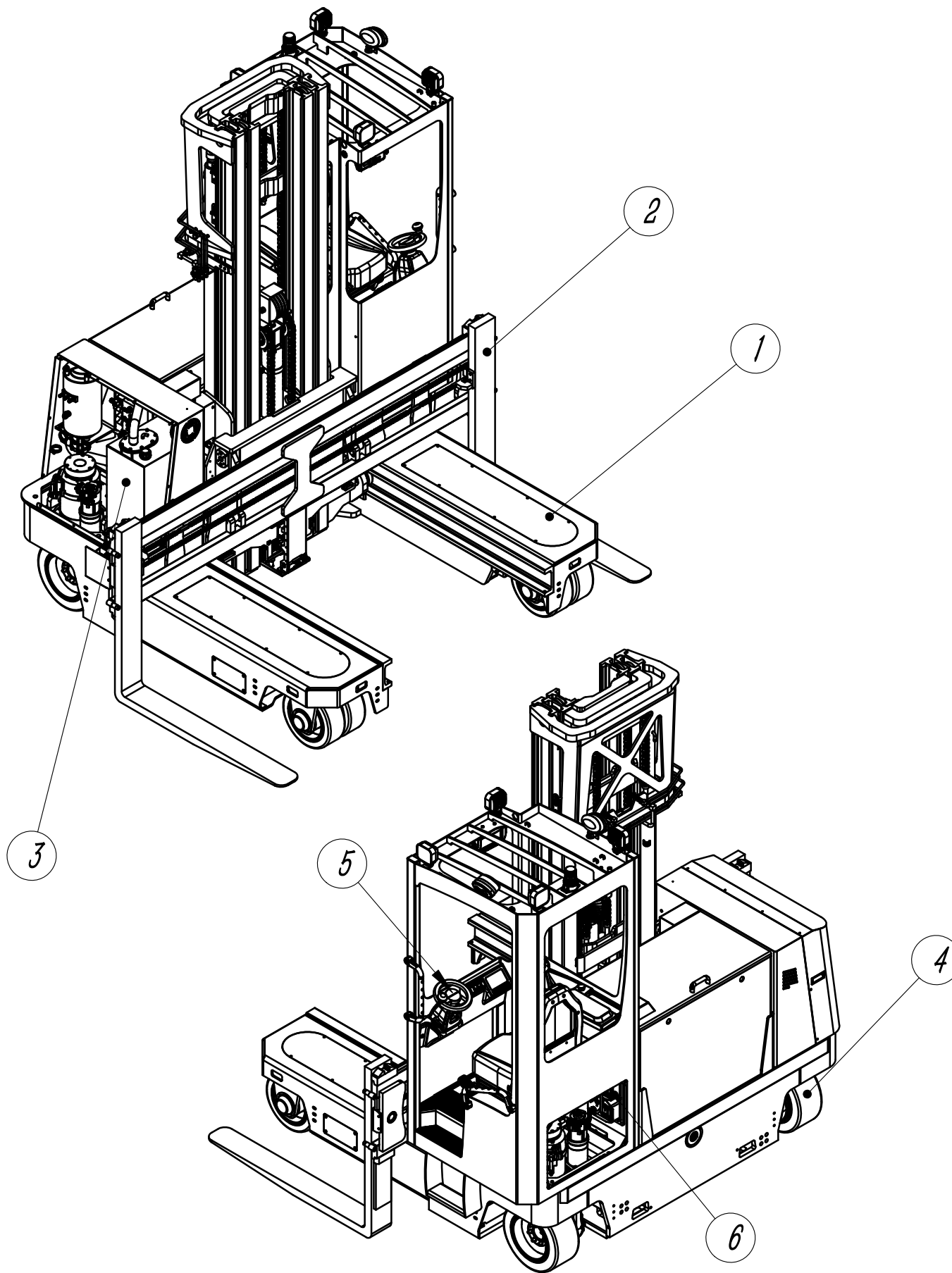
Content

NO.	CODE	DESIGNATION	SUITABLE MODEL	PAGE
Assembly				
Fig.0-1	MQC35	Multi-directional forklift truck		0-1
Body system				
Fig.1-1	MQC35.1	Body system		1-1
Fig.1-2	MQC35.1.2	Baering wheel assembly		1-2
Fig.1-3	MQC35.1.3	Cabin assembly		1-3
Fig.1-4	MQC35.1.4	Swing bridge assembly		1-4
Fig.1-5	MQC35.1.5	Swing shaft assembly		1-5
Fig.1-6	MQC35.1.6	Right box assembly		1-6
Fig.1-7	MQC35.1.9	Limit slider assembly		1-7
Lifting system				
Fig.2-1	MQC35.2SQ	Liftingg system		2-1
Fig.2-2	MQC35.2.1SQ-ZP	Outer mast assembly		2-2
Fig.2-3	MQC35.2.2SQ-ZP	Middle mast assembly		2-3
Fig.2-4	MQC35.2.3SQ-ZP	Inner mast assembly		2-4
Fig.2-5	MQC35.2.4SQ-ZP	Inner slide carriage assembly		2-5

Content

NO.	CODE	DESIGNATION	SUITABLE MODEL	PAGE
Fig.2-6	MQC35.2.5SQ-ZP	Fork carriage assembly		2-6
Hydraulic system				
Fig.3-1	MQC35.3SQ	Hydraulic system		3-1
Fig.3-2	MQC35.3.1	Hydraulic tank assembly		3-2
Fig.3-3	MQC35.3.2	Pump motor assembly		3-3
Fig.3-4	MQC35.3.5	Lift solenoid valve assembly		3-4
Drive System				
Fig.4-1	MQC35.4	Driving system		4-1
Steering system				
Fig.5-1	MQC35.5	Steering system		5-1
Fig.5-2	MQC35.5.1	Front steering assembly		5-2
Fig.5-3	MFZ25.5.4	Steering motor assembly		5-3
Fig.5-3	MQC35.5.2	Steering wheel assembly		5-4
Electri system				
Fig.6-1	MQC35.7	Electric system		6-1
Fig.6-2	MQC35.7.1	Battery assembly		6-2

Fig.0-1 MQC35 Multi-directional forklift truck

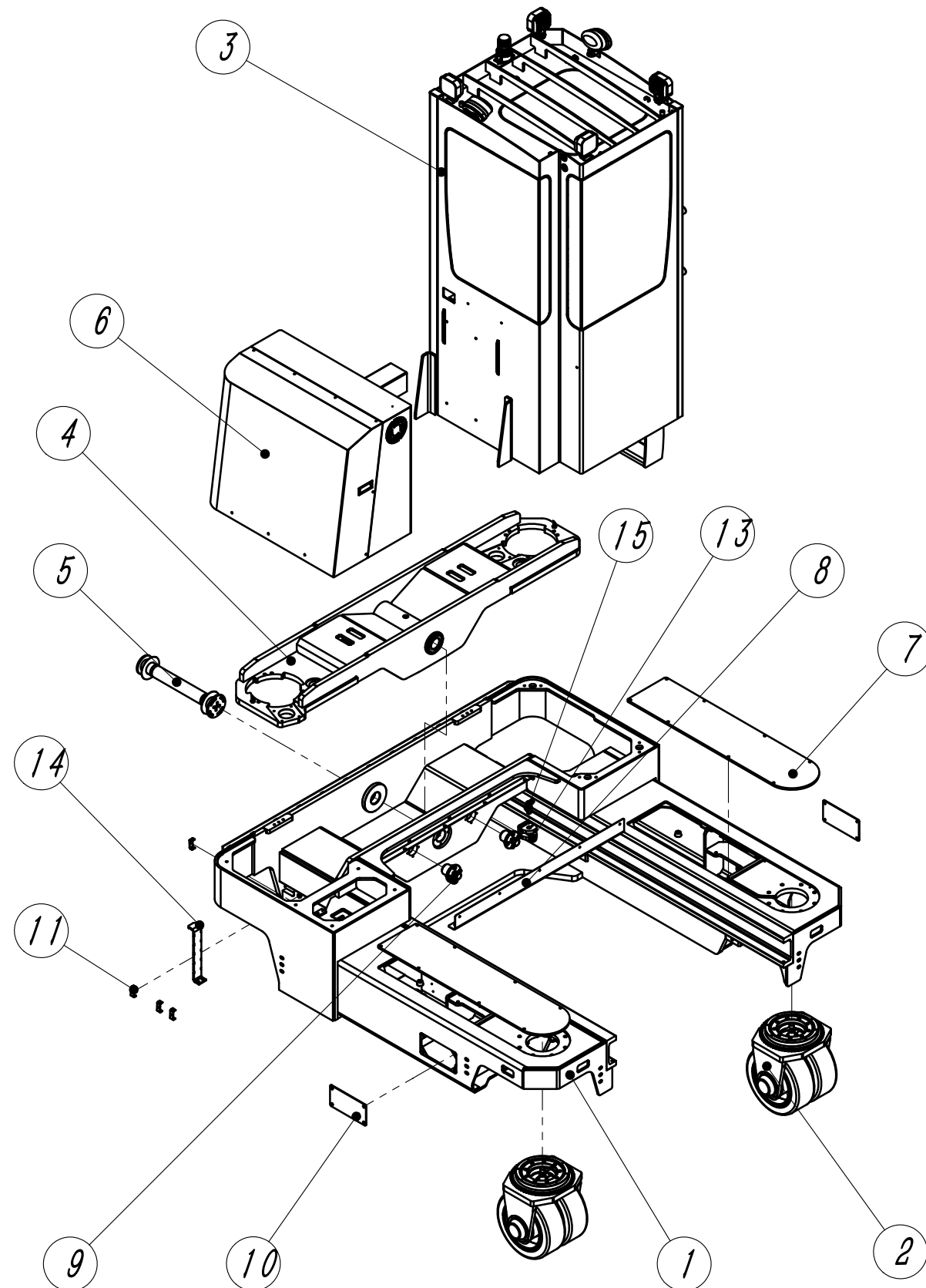


Suitable for MQC35 model

No.	Code	Name	Qty	Remark
1	MQC35.1	Body system	1	
2	MQC35.2SQ	Lifting system	1	
3	MQC35.3SQ	Hydraulic system	1	
4	MQC35.4	Driving system	2	
5	MQC35.5	Steering system	1	
6	MQC35.7	Electri system	1	
7				
8				
9				
10				
11				
12				
13				
14				
15				
16				
17				
18				
19				
20				
21				
22				
23				
24				

Fig. 1-1 MQC35.1 Body system

Suitable for MQC35 model



No.	Code	Name	Qty	Remark
1	MQC35.1.1	Frame welded	1	
2	MQC35.1.2	Bearing wheel assembly	2	
3	MQC35.1.3	Cabin assembly	1	
4	MQC35.1.4	Swing bridge assembly	1	
5	MQC35.1.5	Swing shaft assembly	1	
6	MQC35.1.6	Right box assembly	1	
7	MQC35.1.7	Support leg upper sealing plate		
8	MQC35.1.8	Trunking	1	
9	MQC35.1.9	Limited sliding block	2	
10	MFQ25.1.9	Support leg side cover plate	2	
11	MF13.1.22	Reach oil tube clamp	4	
12	XJJZD06322418	Rubber shock cushion	2	
13	MQB30.1.7F101	Cylinder seat welded	2	
14	MQB30.1.14F101	Walk line board	1	
15	XZ20-055-LW-ZP	Ear plate pin	2	
16				
17				
18				
19				
20				
21				
22				
23				
24				

Fig.1-2 MQC35.1.2 Bearing wheel assembly

Suitable for MQC35 model

No.	Code	Name	Qty	Remark
1	MQC35.1.2.1	Bearing wheel carrier welded		
2	MQC35.1.2.2	Bearing wheel axle	1	
3	MQC35.1.2.3	Spacer	2	
4	MQC35.1.2.4	Steering big chain wheel	1	
5	MQC35.1.2.5	Front wheel encoder	1	
6	TFC25.1.4.9	Block cover	2	
7	14×5-10-SM-MQC35	Solid tyre assembly	2	
8	BYT-005-00	Slewing bearing	1	
9	GT567505	Spacer	2	
10	GB276 6311-2Z	Deep groove ball bearing	4	
11	GB858 48	Lock washer for round nut	2	
12	GB812 M48×1.5	Round nut	4	
13				
14				
15				
16				
17				
18				
19				
20				
21				
22				
23				
24				

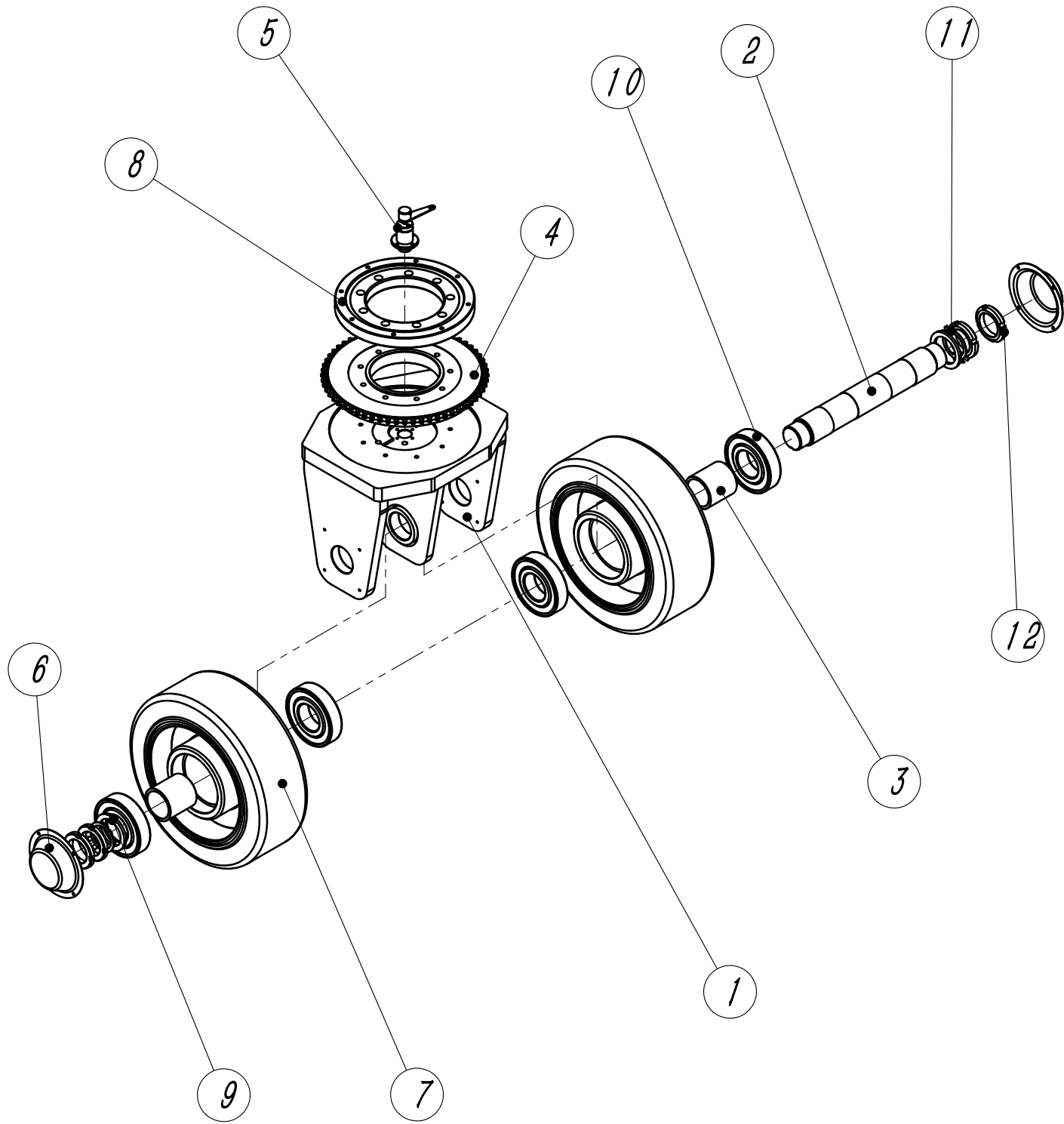
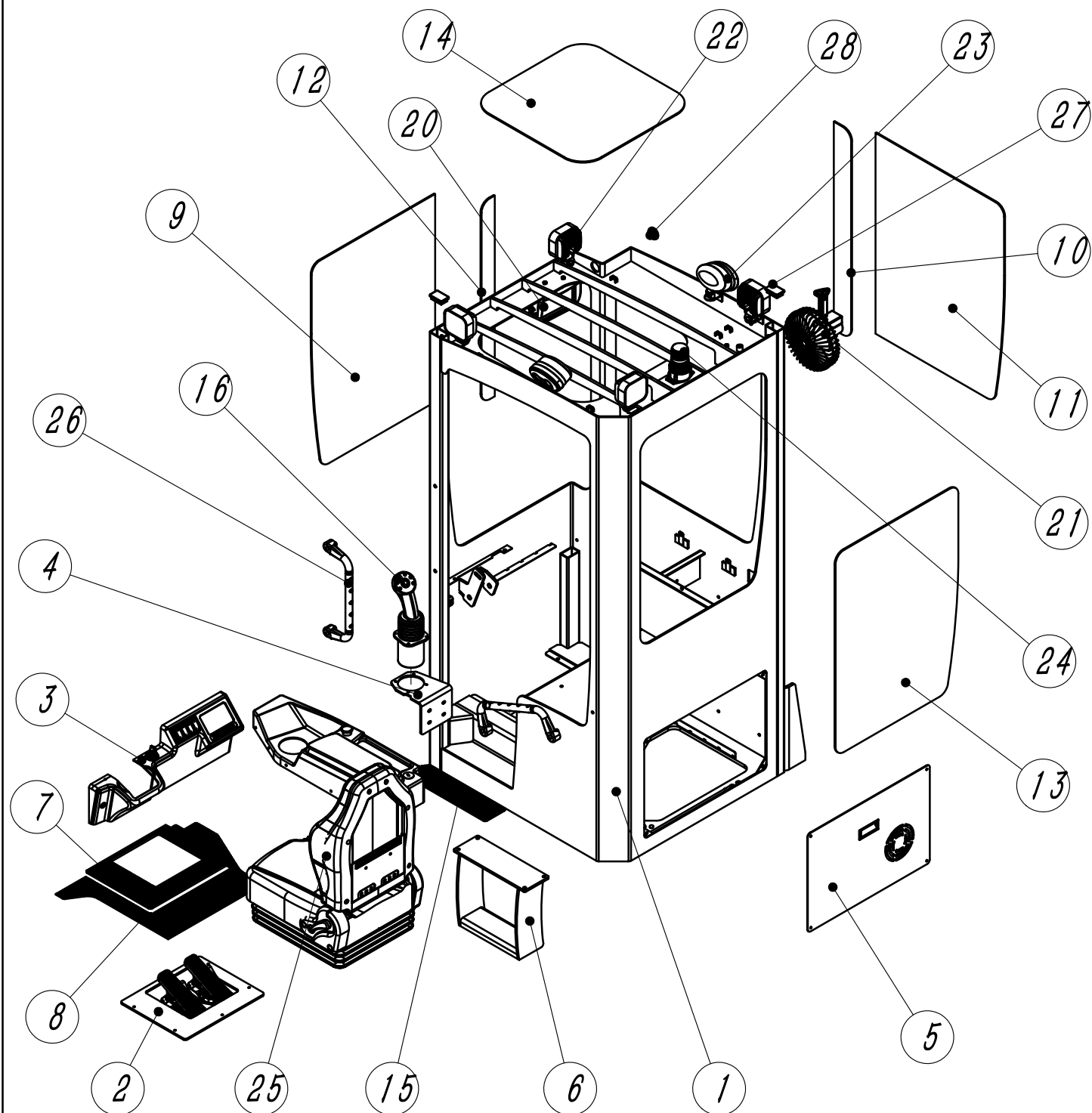


Fig.1-3 MQC35.1.3 Cabin assembly



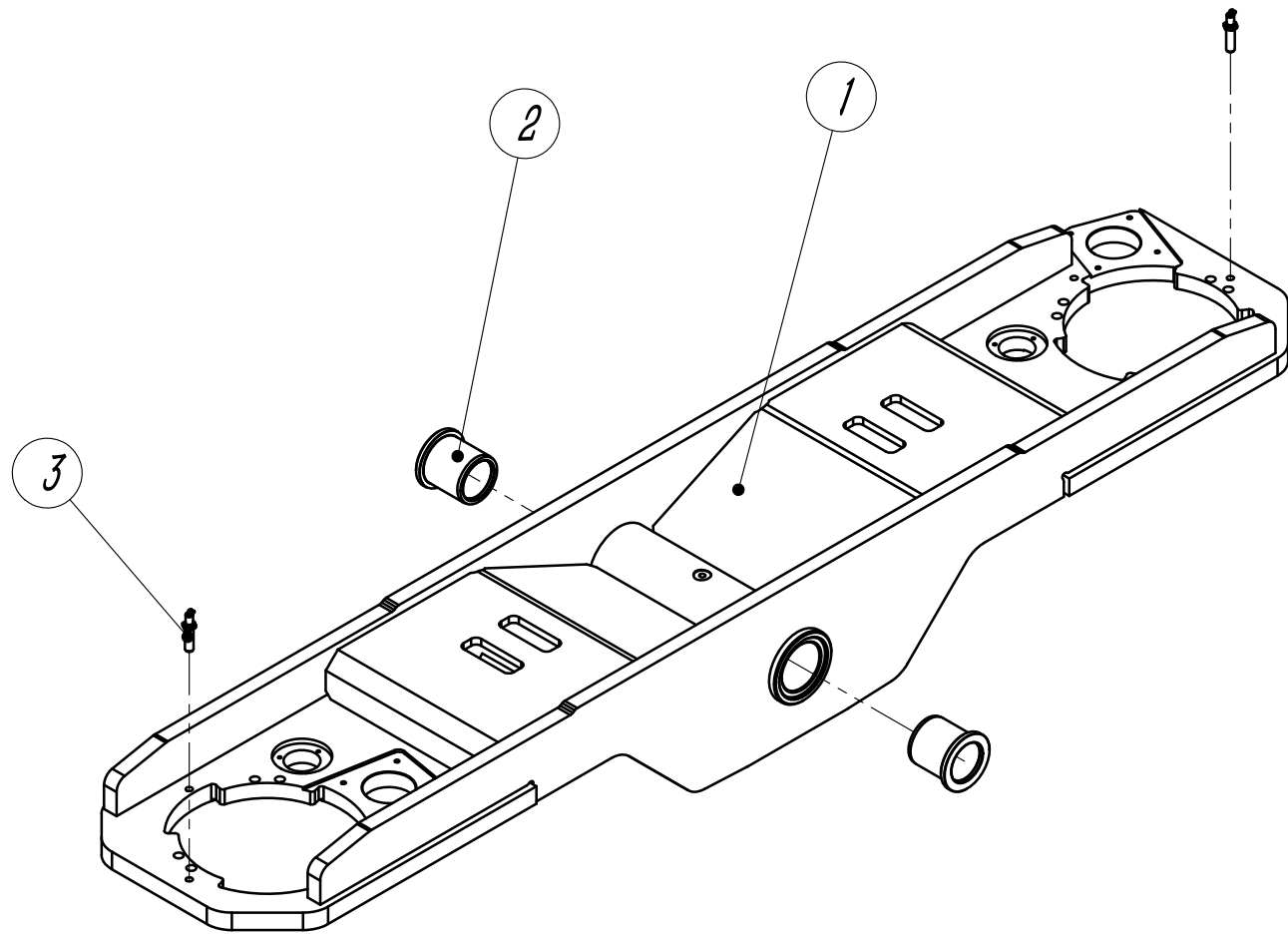
Suitable for MQC35 model

No.	Code	Name	Qty	Remark
1	MQC35.1.3.1	Cab welded	1	
2	MQC35.1.3.2-ZP	Pedal welded	1	
3	MQC35.1.3.3	Covering parts assembly	1	
4	MQC35.1.3.4	Handle mounting plate	1	
5	MQC35.1.3.5-ZP	Cab sealing plate assembly	1	
6	MQC35.1.3.6	Transition pedal welded	1	
7	MQC35.1.3.7	Rubber gasket I	1	
8	MQC35.1.3.8	Rubber gasket II	1	
9	MQC35.1.3.10	Front glass I	1	
10	MQC35.1.3.11	Front glass II	1	
11	MQC35.1.3.12	Side glass I	1	
12	MQC35.1.3.13	Side glass II	1	
13	MQC35.1.3.14	Rear glass	1	
14	MQC35.1.3.16	Upper glass	1	
15	MQC35.1.3.17	Rubber gasket III	1	
16	BV85R	Handle	1	
17	DL2280-24V	Horn	1	
18	DJB-24B-ZP-A	Reverse buzzer	1	
19	ZB030048024TA-BYT	DC convert	1	
20	17032010-7	Wireless display	1	
21	DS08B 24VD.C	Fan	1	
22	BYT-DD-01	Headlight	4	
23	LGD-0001	Blue light	2	
24	XRL2010B	LED warning light	1	

No.	Code	Name	Qty	Remark
25	BF6-3AB-FABRIC	Suspension seat	1	
26	A6S55-10421	Handrail	2	
27	RC6040MC	Pipe plug	2	
28	HXQ-30×35M	Protective ring	5	

Fig.1-4 MQC35.1.4 Swing bridge assembly

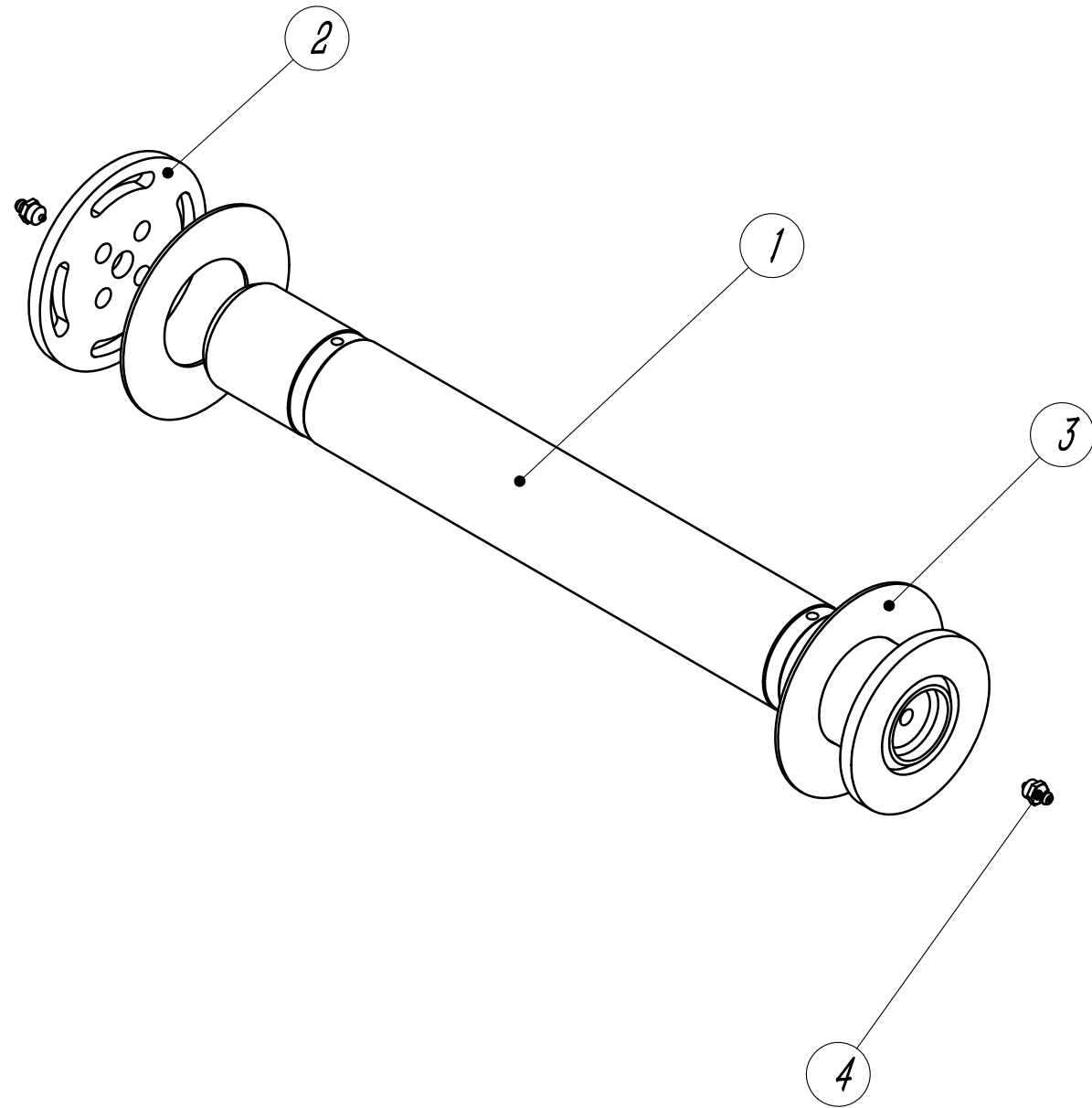
Suitable for MQC35 model



No.	Code	Name	Qty	Remark
1	MQC35.1.4.1	Swing bridge welded	1	
2	HZF607580	Sliding bearing	2	
3	IME12-04BPSZW2S	Proximity switch	2	
4				
5				
6				
7				
8				
9				
10				
11				
12				
13				
14				
15				
16				
17				
18				
19				
20				
21				
22				
23				
24				

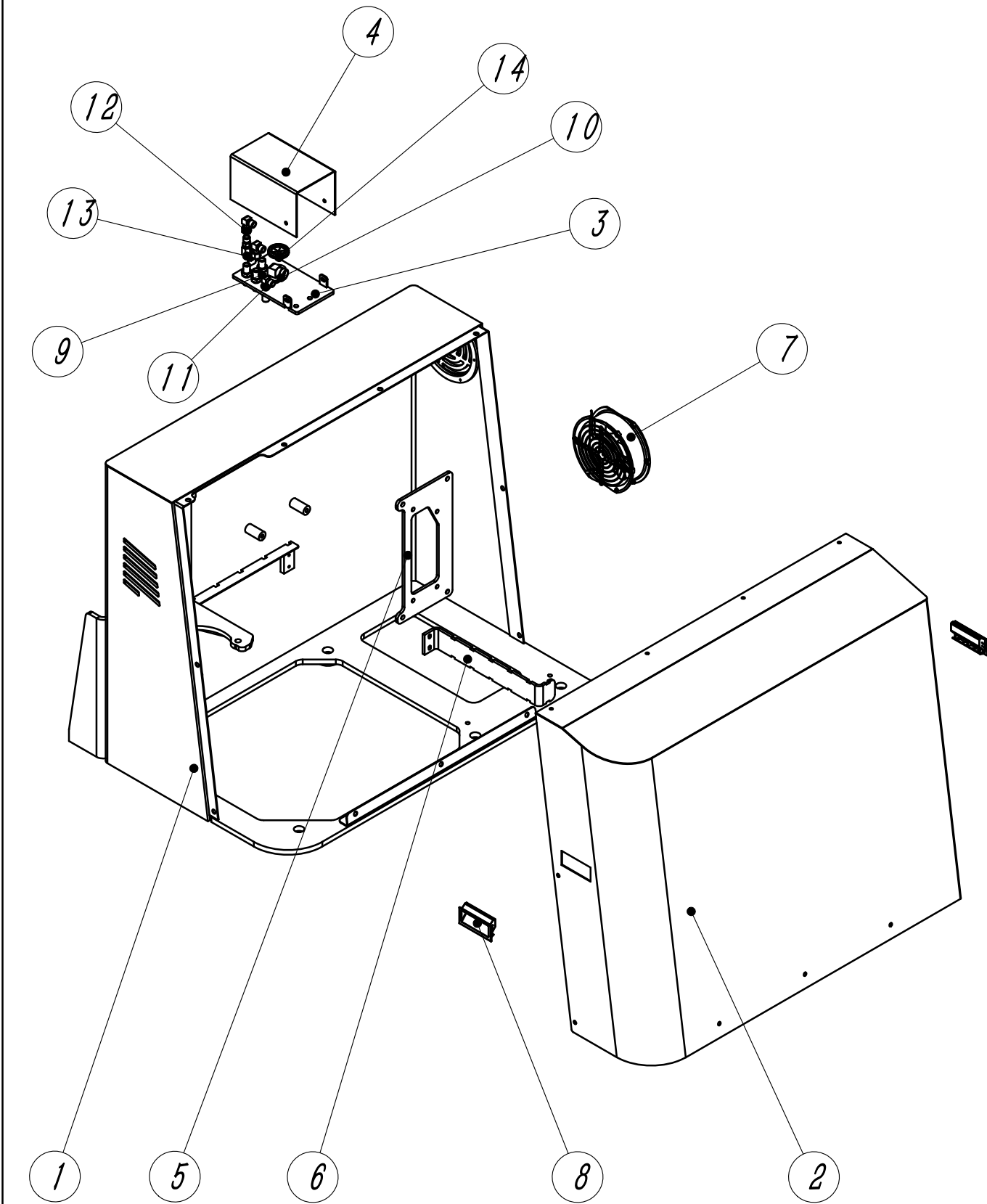
Fig. 1-5 MQC35.1.5 Swing shaft assembly

Suitable for MQC35 model



No.	Code	Name	Qty	Remark
1	MQC35.1.5.1	Swing shaft welded	1	
2	MQB30.1.5.2F101	Stop plate	1	
3	MQB30.1.24	Adjusting shim	2	
4	JB7940.1 M10×1	Straight through pressure oil filling cup	2	
5				
6				
7				
8				
9				
10				
11				
12				
13				
14				
15				
16				
17				
18				
19				
20				
21				
22				
23				
24				

Fig. 1-6 MQC35.1.6 Right box assembly

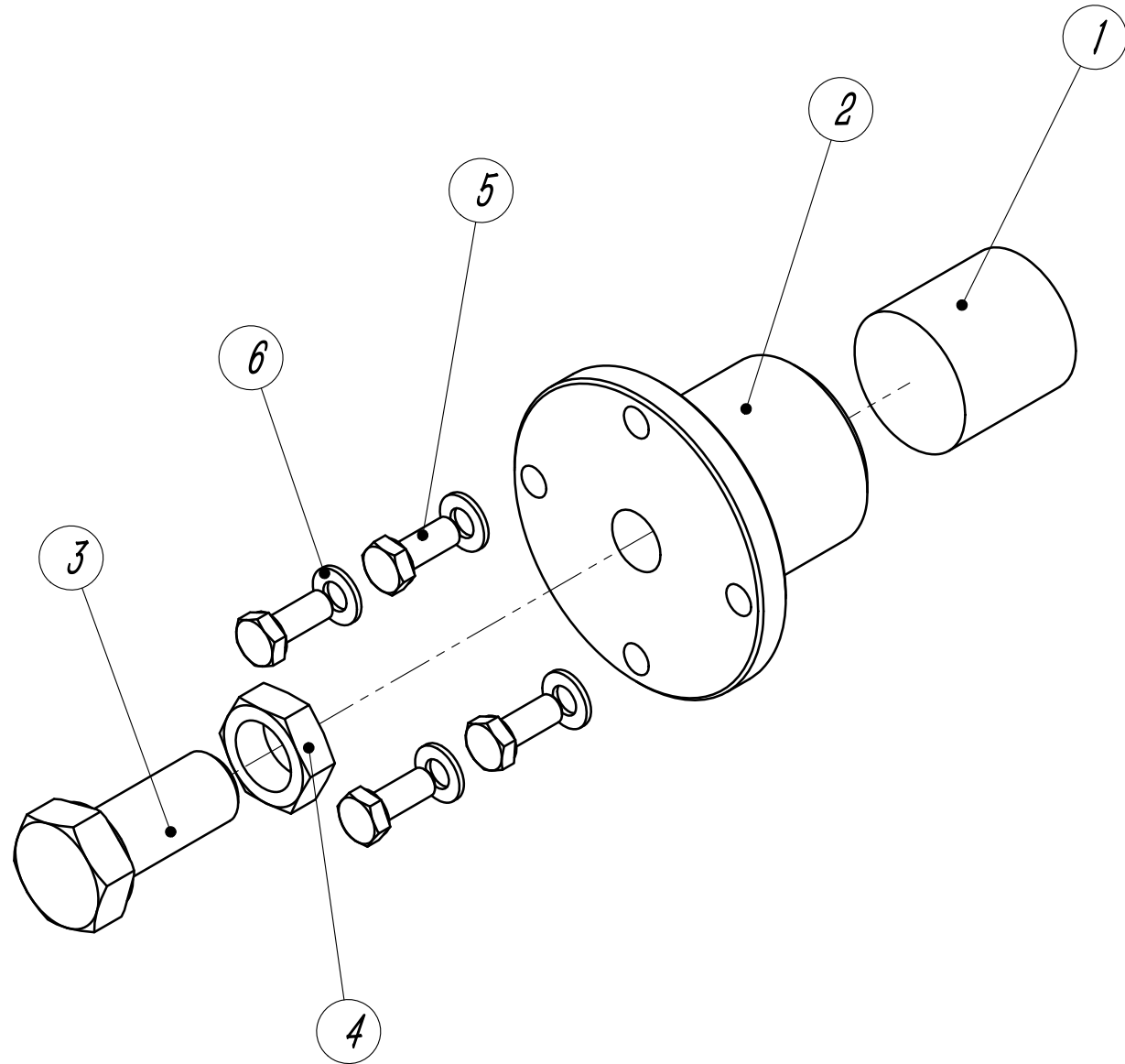


Suitable for MQC35 model

No.	Code	Name	Qty	Remark
1	MQC35.1.6.1	Right box welding	1	
2	MQC35.1.6.2	Right box door welding	1	
3	MQC35.1.6.3	Right box joint mounting plate welding		
4	MQC35.1.6.4	Right box joint cover welding		
5	MQC35.1.6.6	Valve mounting plate	1	
6	MQB30.1.14F101	Wiring board	1	
7	YY17251H24B-ZC	Fan	1	
8	KS01	Buckle hand	2	
9	6C-14LN	Straight through plate joint	3	
10	S6C9-22LN	Straight through plate joint	1	
11	6C9-14LN	Straight through plate joint	1	
12	S2C9-14W	External thread conversion 90° joint		
13	S2C-14W	Internal and external thread adapter		
14	HXQ-30×35M	Protective coil	1	
15				
16				
17				
18				
19				
20				
21				
22				
23				
24				

Fig. 1-7 MQC35.1.9 Limit slider assembly

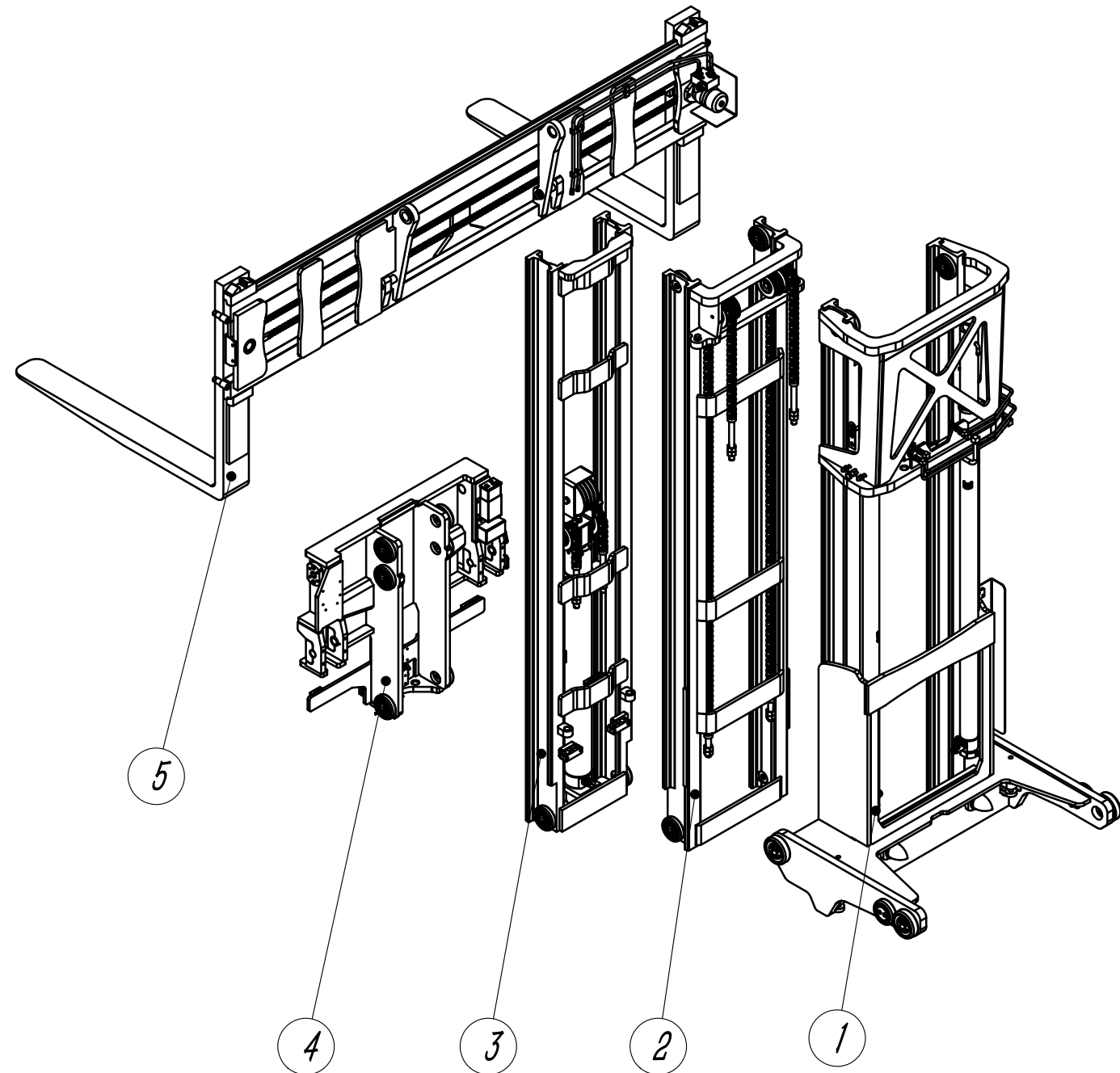
Suitable for MQC35 model



No.	Code	Name	Qty	Remark
1	MQC35.1.9.1	Nylon slider	1	
2	MQC35.1.9.2	Adjust screw mounting plate		
3	GB5783 M20×60	Hexagon head bolts	1	
4	GB6172.1 M20	Hexagon Thin Nuts	1	
5	GB5783 M8×20	Hexagon head bolts	4	
6	GB97.1 8	Flat Washers	4	
7				
8				
9				
10				
11				
12				
13				
14				
15				
16				
17				
18				
19				
20				
21				
22				
23				
24				

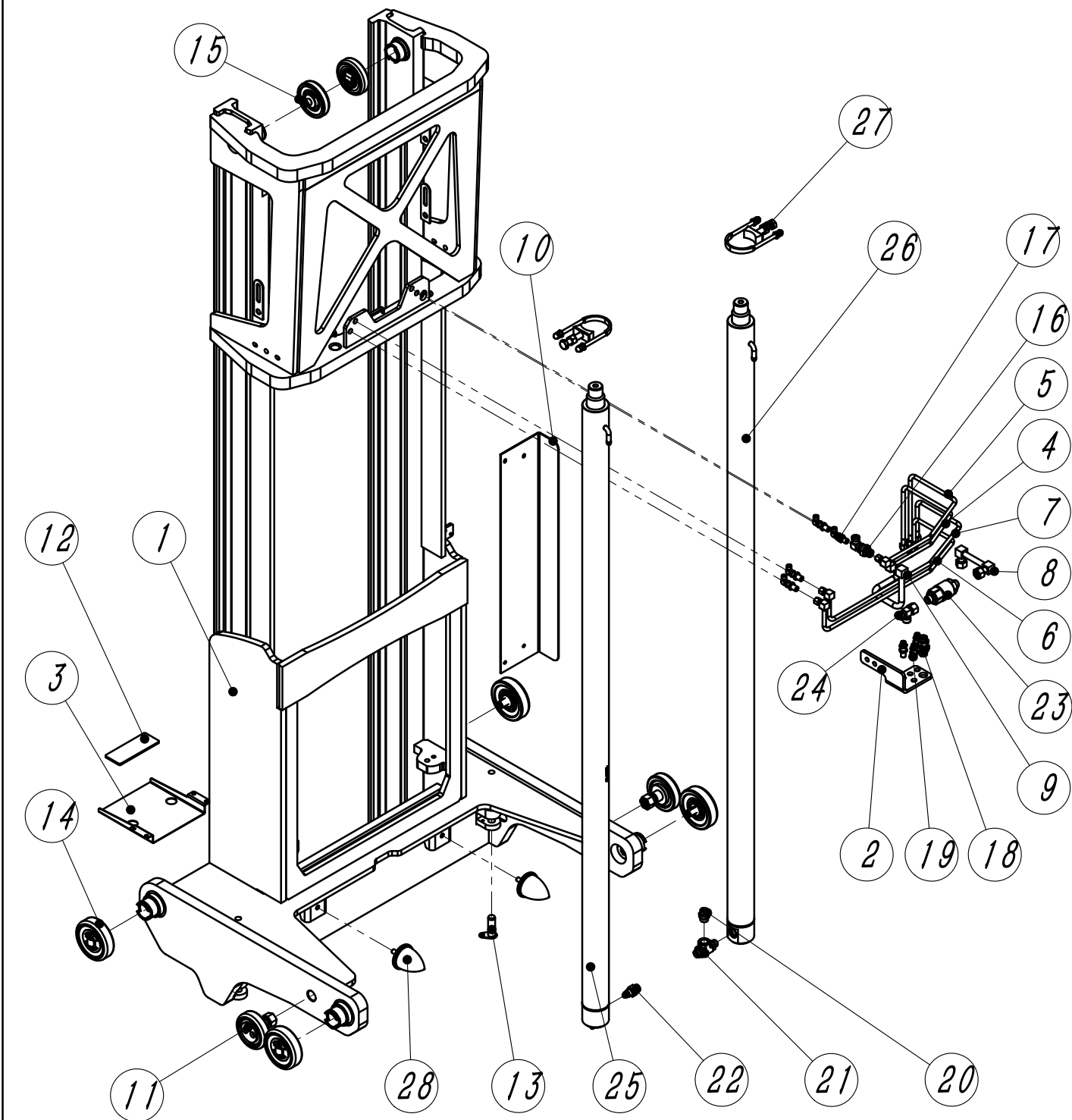
Fig. 2-1 MQC35.2SQ Lifting system

Suitable for MQC35 model



No.	Code	Name	Qty	Remark
1	MQC35.2.1SQ-ZP	Outer mast assembly	1	
2	MQC35.2.2SQ-ZP	Middle mast assembly	1	
3	MQC35.2.3SQ-ZP	Inner mast assembly	1	
4	MQC35.2.4SQ-ZP	Inner carriage assembly	1	
5	MQC35.2.5SQ-ZP	Fork carriage assembly	1	
6				
7				
8				
9				
10				
11				
12				
13				
14				
15				
16				
17				
18				
19				
20				
21				
22				
23				
24				

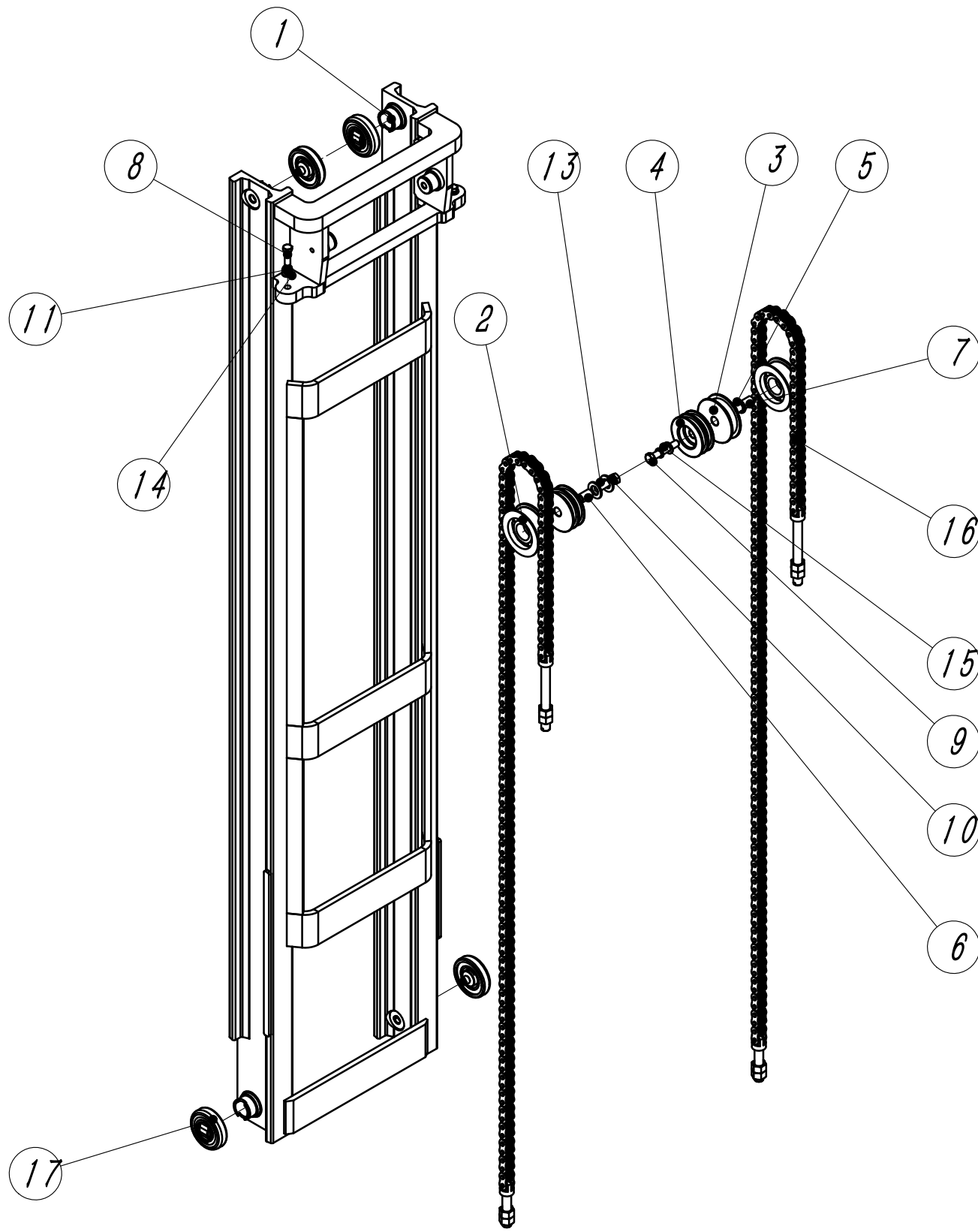
Fig. 2-2 MQC35.2.1SQ-ZP Outer mast assembly



Suitable for MQC35 model

No.	Code	Name	Qty	Remark
1	MQC35.2.1SQ	Outer mast welding	1	
2	MQC35.2.8.1SQ	Outer mast joint mounting plate		
3	MQC35.2.8.2SQ	Bottom limit plate	1	
4	MQC35.3.10.1SQ	Adjustable distance steel pipe assembly I		
5	MQC35.3.10.2SQ	Adjustable distance steel pipe assembly II		
6	MQC35.3.10.3SQ	Inclined steel pipe assembly I		
7	MQC35.3.10.4SQ	Inclined steel pipe assembly II		
8	MQC35.3.10.5SQ	Lift steel pipe assembly I	1	
9	MQC35.3.10.6SQ	Lift steel pipe assembly II	1	
10	MQD30.2.1.3SQ	Tubing guard	1	
11	TFC25.2.1.5.1SQ-ZP	Eccentric wheel assembly	2	
12	MQD30.2.1.4.2SQ	Buffer rubber pad	1	
13	TF15.3.13	Welding of forward cylinder pin		
14	760311K8T.1	Composite roller body	4	
15	760211BYT(107.80).1	Composite roller body	2	
16	S6C9-22LN	Right angle through plate joint		
17	6C9-14LN	Right angle through plate joint		
18	S6C-22LN	Right angle through plate joint		
19	6C-14LN	Right angle through plate joint		
20	S1CH-22DQ	Straight connector	1	
21	SKCMH-22-22-200GDQ	Three-way pipe joint	1	
22	BYT-QDF-3t-01	Shut-off valve assembly	1	
23	NXSF2-16-2-49L	Speed limiter valve	1	
24	SCC-22W	Internal thread main branch tee joint		
25	TM5063-MF-HQ-L	Lift cylinder	1	
26	TM5063-MF-HQ-R	Lift cylinder	1	
27	UM10-80-105-30B-ZP1	U-bolt assembly	2	
28	7589VP37	Shock absorber	2	

Fig. 2-3 MQC35.2.2SQ-ZP Middle mast assembly

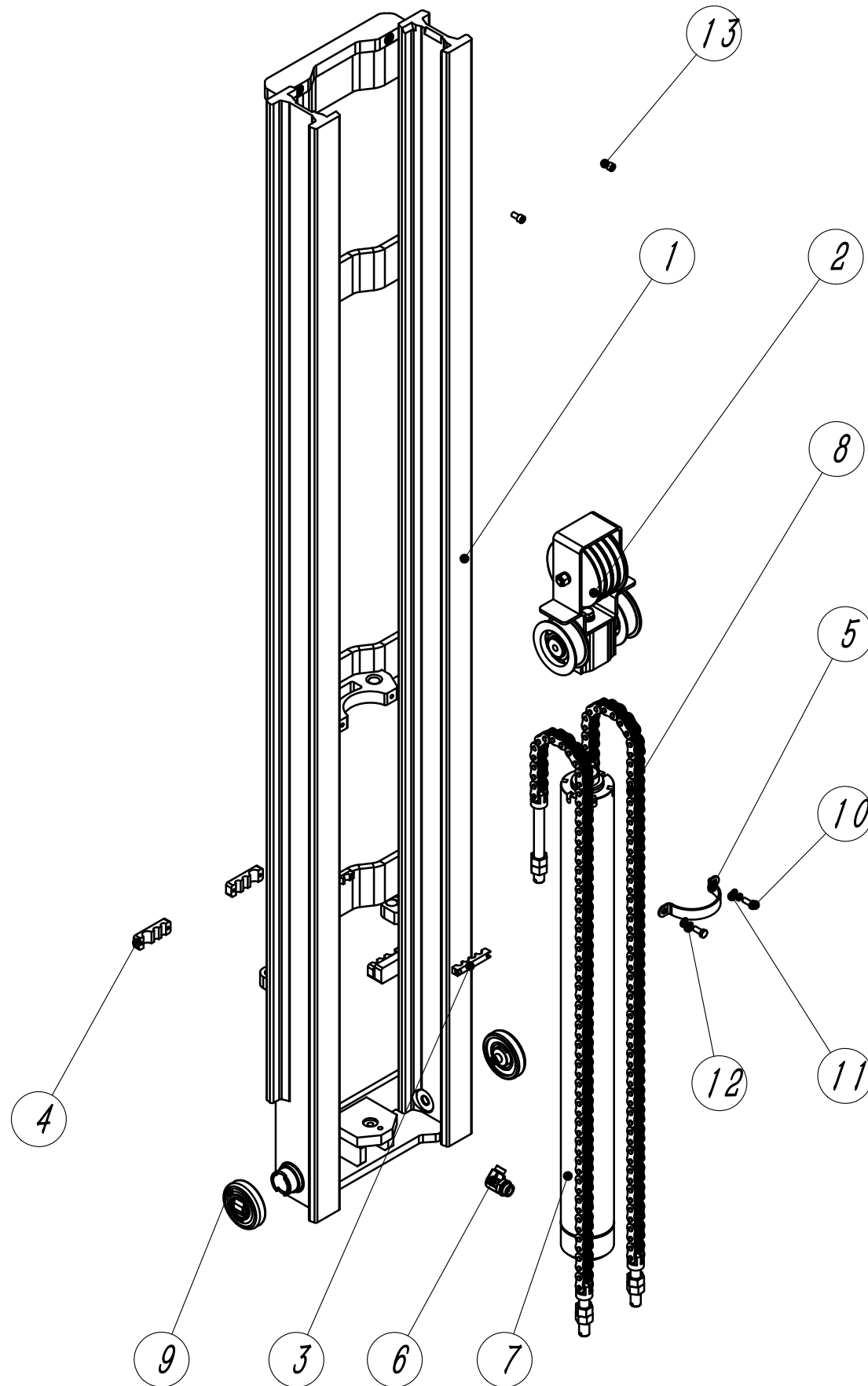


Suitable for MQC35 model

No.	Code	Name	Qty	Remark
1	MQC35.2.2SQ	Middle mast welding	1	
2	780309K3	Chain wheel	2	
3	HL23-080-33	Pulley	1	
4	HL23-85-41	Pulley	2	
5	GT233405	Spacer	2	
6	GT172235	Spacer	1	
7	GT172260	Spacer	1	
8	GB5786 M14×1.5×45	Hexagon head bolts	2	
9	GB5782 M16×90	Hexagon head bolts	1	
10	GB5783 M16×60	Hexagon head bolts	1	
11	GB93 14	Spring washer	2	
12	GB93 16	Spring washer	2	
13	GB97.1 24	Flat Washers	2	
14	GB97.1 14	Flat Washers	2	
15	GB97.1 16	Flat Washers	2	
16	LH1634-113	Lifting chain set	2	
17	760211BYT(107.80).1	Composite roller body	4	
18				
19				
20				
21				
22				
23				
24				

Fig. 2-4 MQC35.2.3SQ-ZP Inner mast assembly

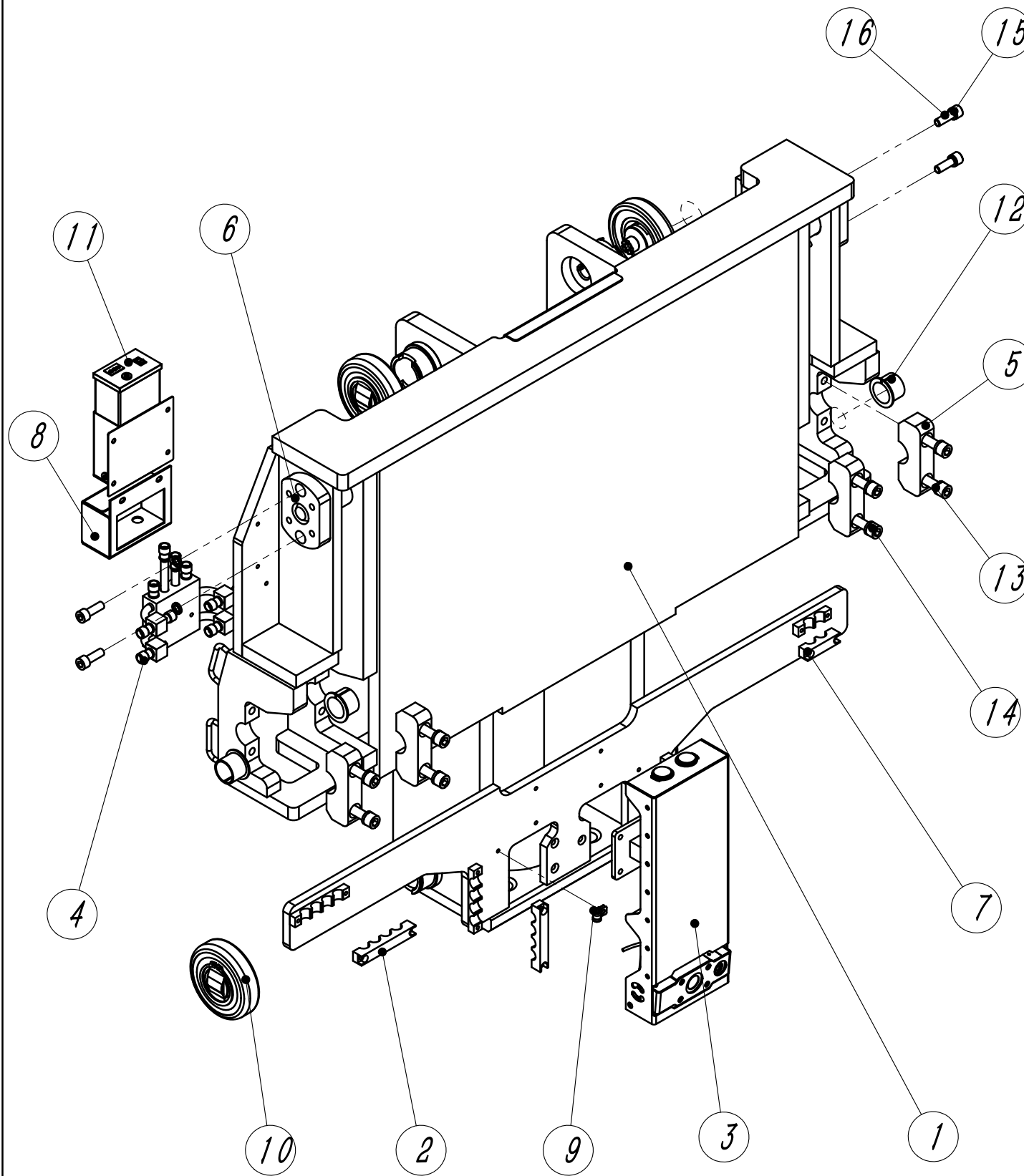
Suitable for MQC35 model



No.	Code	Name	Qty	Remark
1	MQC35.2.3SQ	Inner mast welding	1	
2	MQC35.2.8.3SQ	Rubber wheel cage assembly	1	
3	MQC35.2.8.4SQ	Quadruple pipe clamp fixed cover plate	1	
4	MFZ20.2.1.2SQ	Left tubing clamp mounting cover plate	2	
5	MK35.2.7Q	The forward cylinder clamp	1	
6	S1CG9-22-12OG (AH13)	Right Angle fittings	1	
7	TM70100-MF	Lifting cylinder	1	
8	LH1634-65	Lifting chain group	2	
9	760211BYT(107.80).1	Composite roller body	2	
10	GB5783 M10x25	Hexagon head bolts	2	
11	GB97.1 10	Flat washer	4	
12	GB93 10	Spring washer	4	
13	GB70.1 M10*20	Hexagon socket head screws	2	
14				
15				
16				
17				
18				
19				
20				
21				
22				
23				
24				

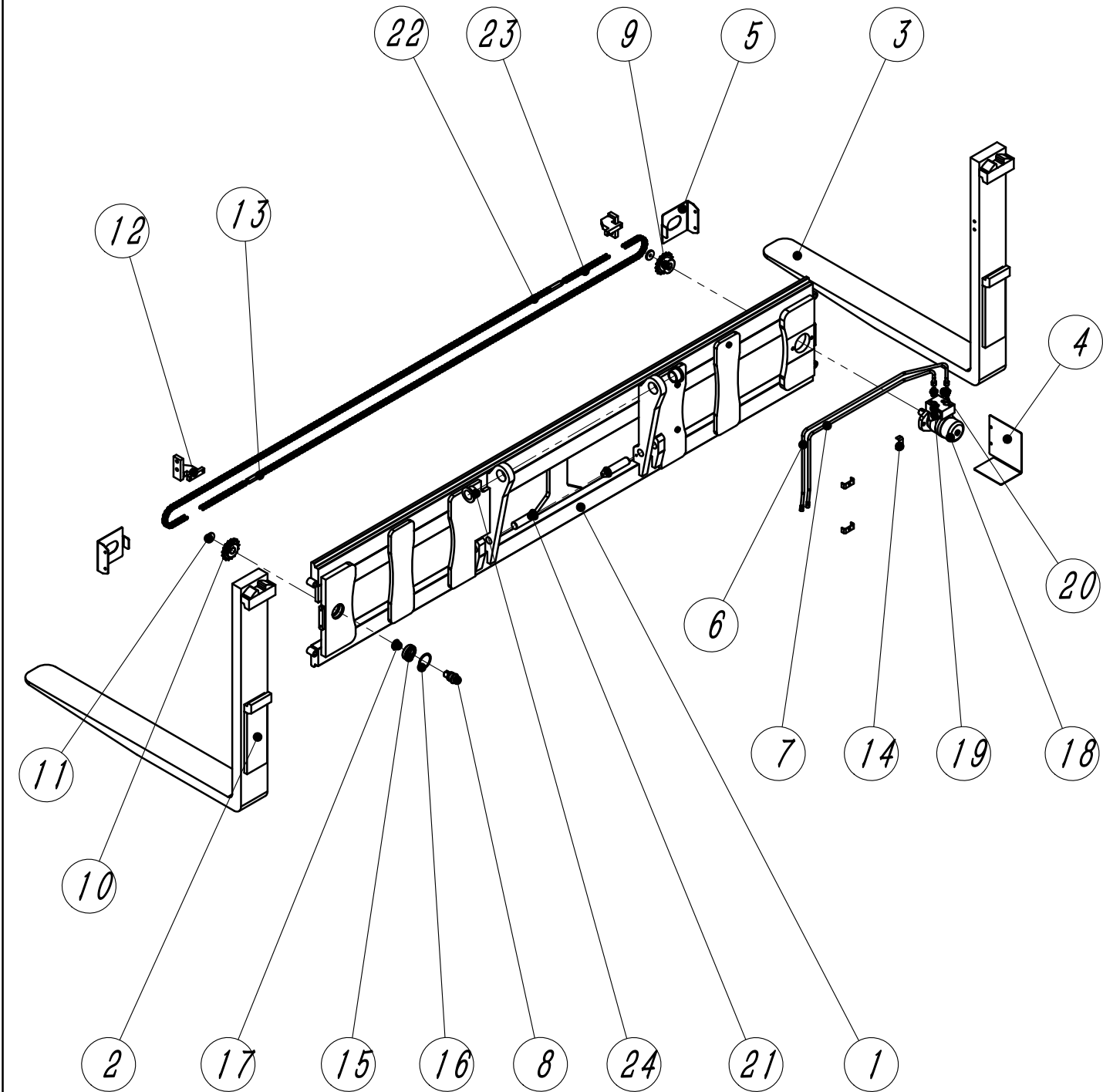
Fig. 2-5 MQC35.2.4SQ-ZP Inner slide carriage assembly

Suitable for MQC35 model



No.	Code	Name	Qty	Remark
1	MQC35.2.4SQ	Inner slide frame welding	1	
2	MQC35.2.8.4SQ	Quadruple pipe clamp fixed cover plate	2	
3	MQC35.2.8.5SQ	Camera installation component	1	
4	MQC35.3.10.7SQ	Slide frame integrated steel pipe	1	
5	MQD30.2.4.3SQ	Inclined cylinder head plate	4	
6	MQD30.2.4.4SQ	Connection shaft welding	2	
7	TF15.2.18SQ	Front cylinder tubing clamp fixed cover plate	2	
8	MQZ25.2.3.4.2SQ	Camera cable box on the right	1	
9	RSC1-6	The line clamp	1	
10	760211BYT(107.80).1	Composite roller body	6	
11	DF-DC-1280A	Lithium battery	1	
12	HZF303426	Sliding bearing	4	
13	GB93 12	Spring washer	8	
14	GB70.1M12 x65	Hexagon socket head screws	8	
15	GB93 10	Spring washer	4	
16	GB70.1M10 x30	Hexagon socket head screws	4	
17				
18				
19				
20				
21				
22				
23				
24				

Fig. 2-6 MQC35.2.5SQ-ZP Fork carriage assembly

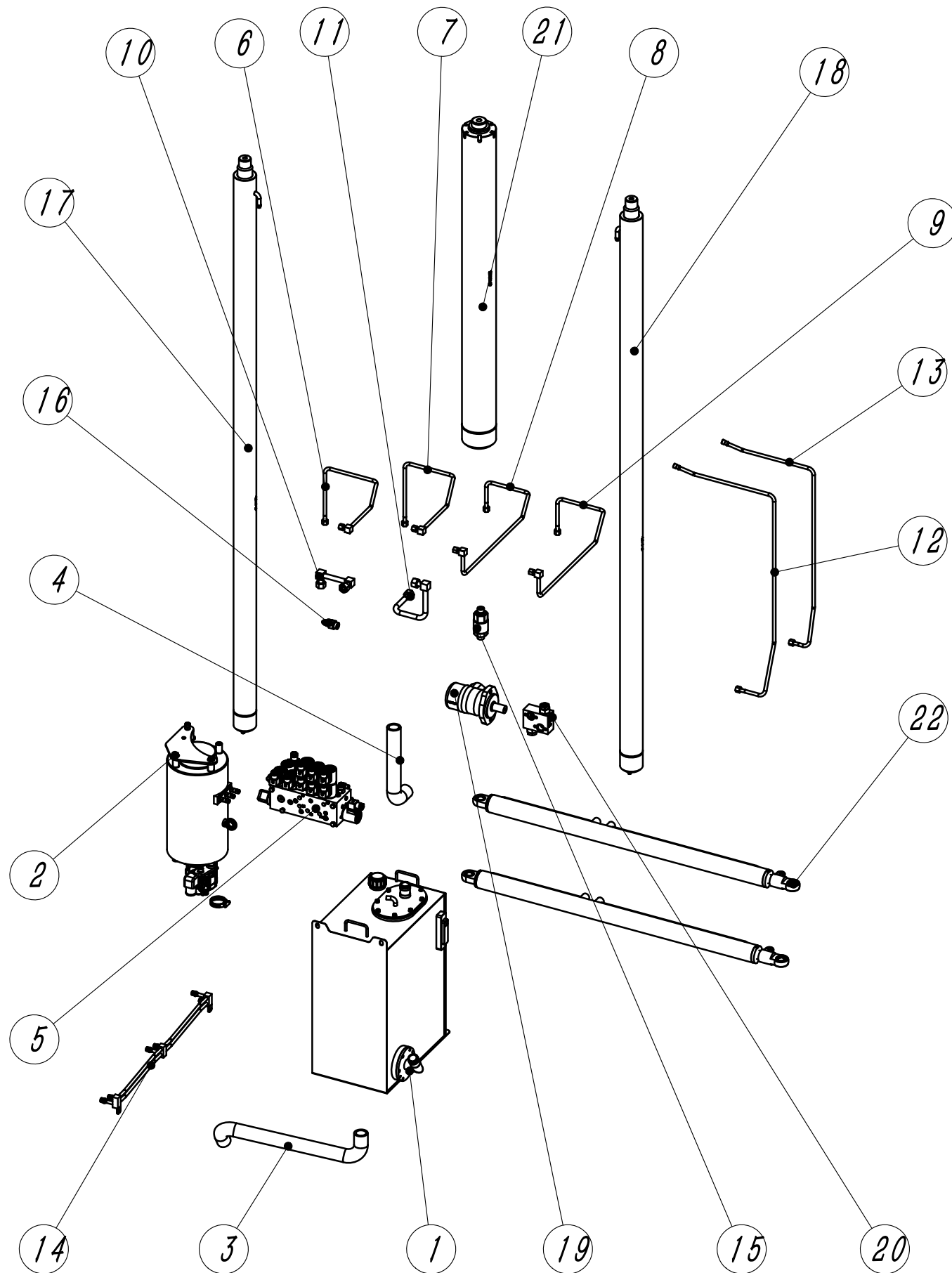


Suitable for MQC35 model

No.	Code	Name	Qty	Remark
1	MQC35.2.5SQ	Fork carriage welding	1	
2	MQC35.2.5.4-L	Left side fork	1	
3	MQC35.2.5.5-L	Right side fork	1	
4	MQD30.2.5.2.1SQ	The cover of hydraulic motor	1	
5	MQD30.2.5.3.1SQ	Backplate of hydraulic motor	2	
6	MQC35.3.10.8SQ	Steel tube assembly III of positioner	1	
7	MQC35.3.10.9SQ	Steel tube assembly VI of positioner	1	
8	TFC25.2.5.4	Sprocket shaft	1	
9	MFD30.2.5.2	Chain wheel of positioner I	1	
10	TFC25.2.5.6	Chain wheel of positioner II	1	
11	TFC25.2.5.7	Retaining ring	2	
12	TFC25.2.5.11	Chain plate welding	2	
13	TFC35.2.23	Tension mechanism	2	
14	MF13.1.22	Forward tubing clamp	3	
15	GB276 6007-2Z	Deep groove ball bearings	1	
16	GB893.1	Elastic retainer for 62 holes	1	
17	GB894.1 35	Elastic retainer for shaft	1	
18	BMP-200-2-A-D	Brake motor	1	
19	FYRHD-10-D	2-way overflow valve	1	
20	SLCG-14-08DQ	Straight through pipe connector	2	
21	XZ30-085-LW	Ear plate pin shaft	2	
22	10A-147	Transmission chain group	2	
23	10A-15	Transmission chain group	2	
24	HZF405035	Slide bearing	2	

Fig. 3-1 MQC35.3SQ Hydraulic system

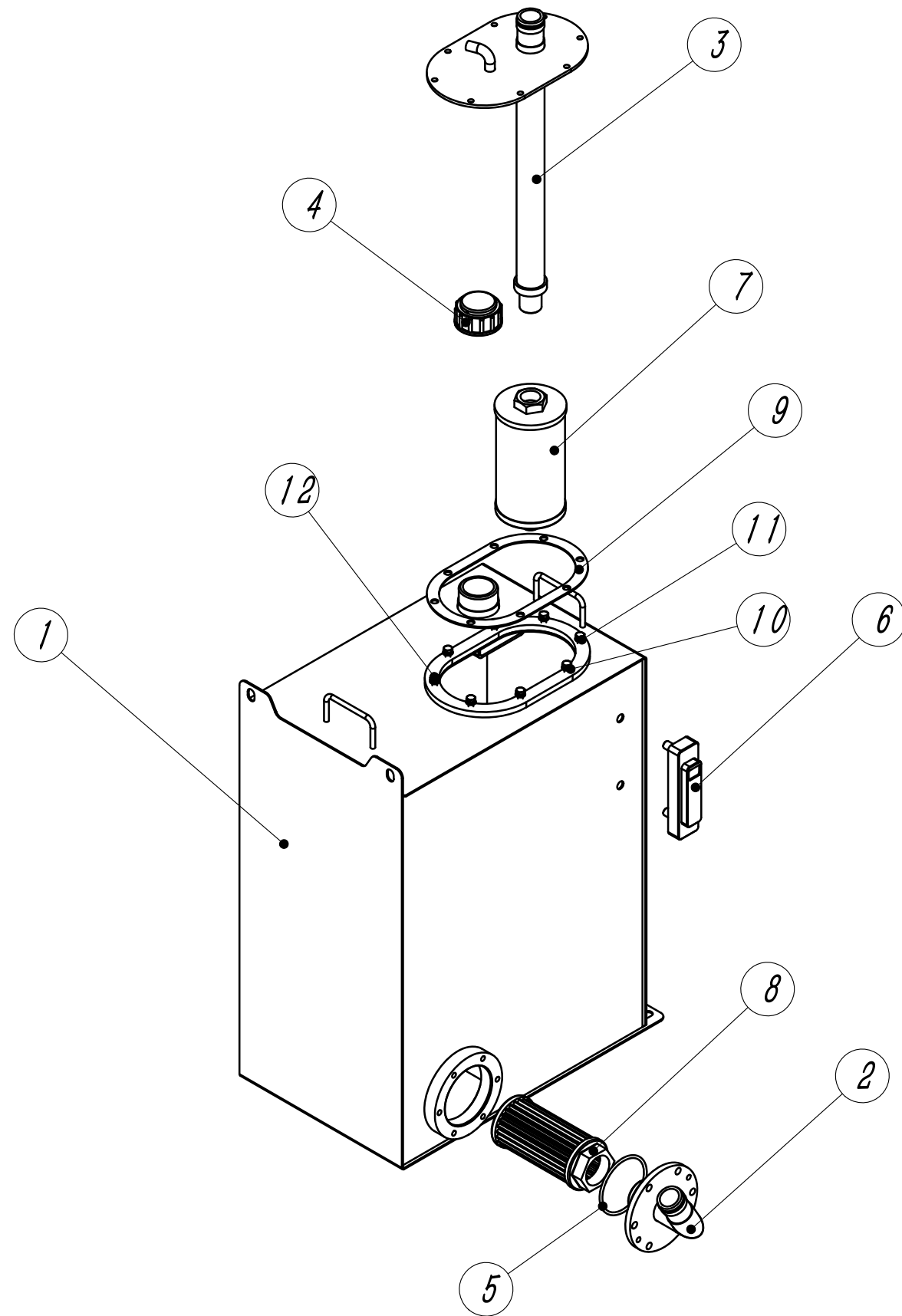
Suitable for MQC35 model



No.	Code	Name	Qty	Remark
1	MQC35.3.1	Hydraulic tank assembly	1	
2	MQC35.3.2	Oil pump motor assembly	1	
3	MQC35.3.3	Oil suction hose	1	
4	MQC35.3.4	Oil return hose	1	
5	MQC30.3.5	Lift solenoid valve assembly	1	
6	MQC35.3.10.1SQ	Steel tube assembly I of positioner	1	
7	MQC35.3.10.2SQ	Steel tube assembly II of positioner	1	
8	MQC35.3.10.3SQ	Steel tube assembly I of tilting cylinder	1	
9	MQC35.3.10.4SQ	Steel tube assembly II of tilting cylinder	1	
10	MQC35.3.10.5SQ	Steel tube assembly I of lifting cylinder	1	
11	MQC35.3.10.6SQ	Steel tube assembly II of lifting cylinder	1	
12	MQC35.3.10.8SQ	Steel tube assembly III of positioner	1	
13	MQC35.3.10.9SQ	Steel tube assembly IV of positioner	1	
14	MQC35.3.10.10SQ	Forward cylinder welding	1	
15	NXSF2-16-2-49 L	The speed limit valve	1	
16	BYT-QDF-3T-01	Shutoff valve assembly	1	
17	TM5063-MF-HQ-L	Lifting cylinder L	1	
18	TM5063-MF-HQ-R	Lifting cylinder R	1	
19	BMP-200-2-A-D	Brake motor	1	
20	FYRHD-10-D	2-Way overflow valve	1	
21	TM70100-MF	Lifting cylinder	1	
22	QY3050-MQC952	Forward cylinder	2	
23				
24				

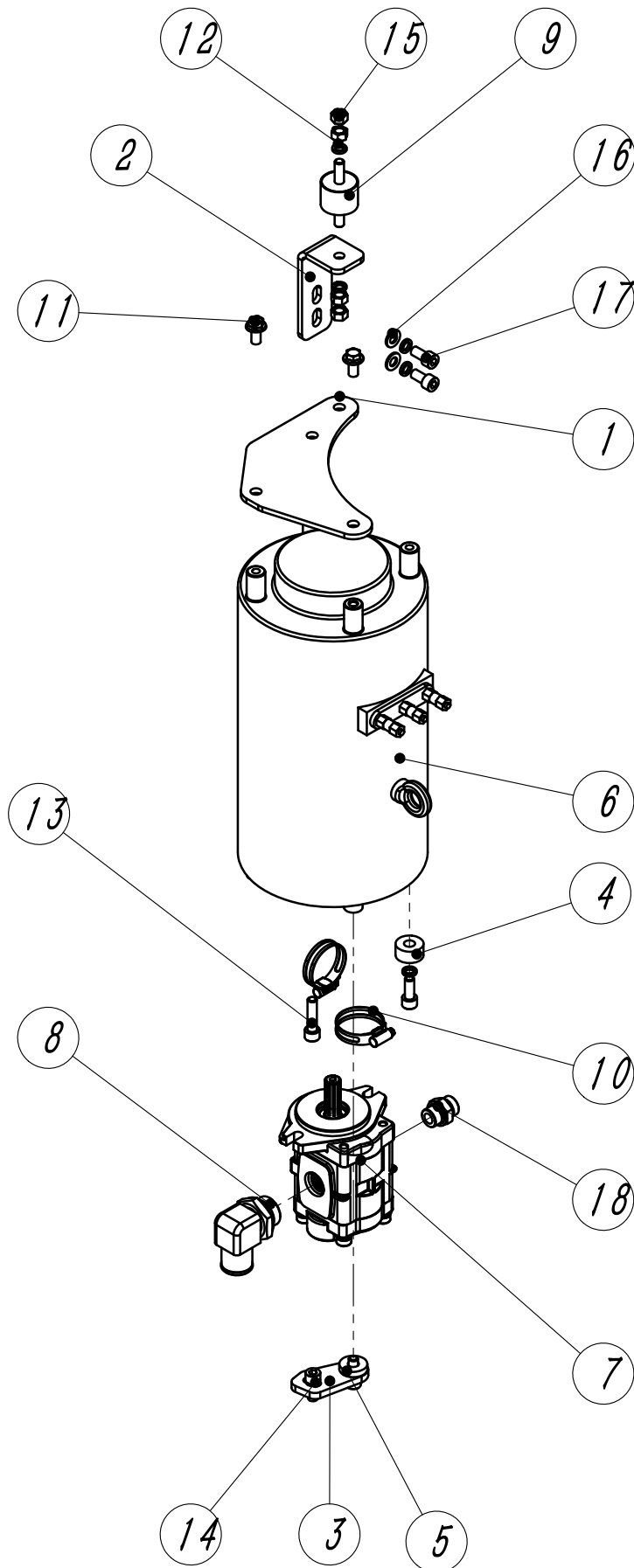
Fig. 3-2 MQC35.3.1 Hydraulic tank assembly

Suitable for MQC35 model



No.	Code	Name	Qty	Remark
1	MQC35.3.1.1	Welding of hydraulic tank	1	
2	MFZ25.3.1.2	Oil suction flange welding	1	
3	MQC35.3.1.3	Return oil flange welding	1	
4	TF15.3.5	Fuel tank cap	1	
5	GB3452.1 73x3.55	O-shaped rubber sealing ring	1	
6	YWZ-100T	Liquid level indicator	1	
7	Y0816A	Scavenge filter	1	
8	WU-100 x80-J	Oil absorption filter	1	
9	MF25.3.1.3	Rubber mat	1	
10	GB97.1 6	Flat washer	8	
11	GB93 6	Spring washer	8	
12	GB5783 M6x16	Hexagon head bolts	8	
13				
14				
15				
16				
17				
18				
19				
20				
21				
22				
23				
24				

Fig.3-3 MQC35.3.2 Pump motor assembly

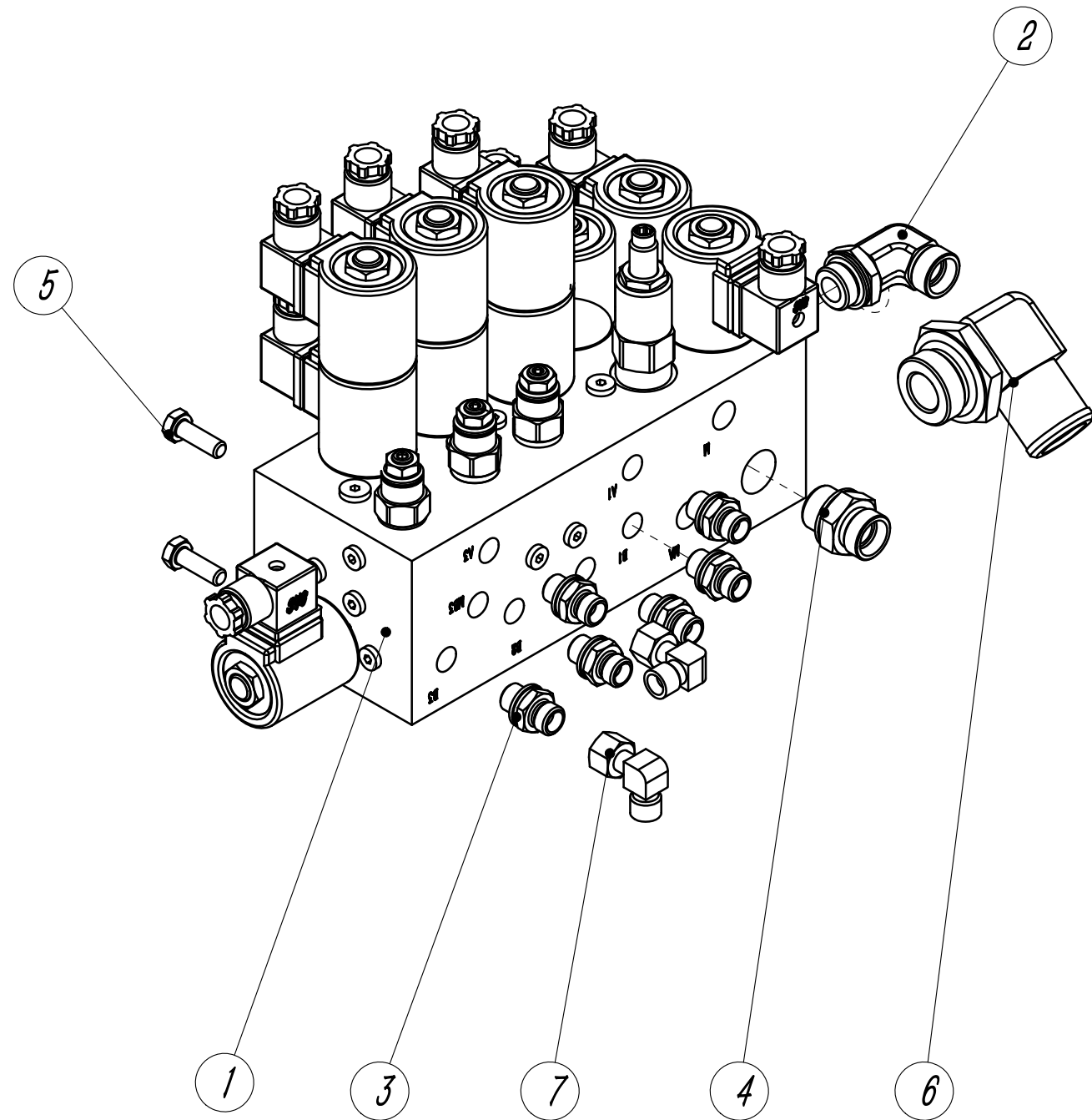


Suitable for MQC35 model

No.	Code	Name	Qty.	Remark
1	MQC35.3.2.1	Pump motor fixed plate	1	
2	MFZ20.3.2.3SQH	Bracket	1	
3	TFZ16.3.2.4	Connecting plate	1	
4	TFZ16.3.2.5	Rubber mat	2	
5	TFZ16.3.2.6	Rubber mat	1	
6	XQJ15-BYT5	Lifting motor	1	
7	DSG05C20F9H1-R237C	Gear pump	1	
8	GJT209L	Right Angle pipe joint	1	
9	XJJZQ10274030	Robber absorber	1	
10	Q67245	Double wire hoop	2	
11	GB5789 M10×20	Hexflange bolts	2	
12	GB93 10	Spring washer	8	
13	GB70.1 M10×40	Internal hexagon-cylindrical head screw ¹		
14	GB70.1 M10×25	Internal hexagon-cylindrical head screw ³		
15	GB6171 M10×1	Type 1 hexagon nut	4	
16	GB97.1 10	Flat washer	2	
17	GB70.1 M10×20	Internal hexagon-cylindrical head screw ²		
18	S1CG-22-08DQ	Barrel connector	1	
19				
20				
21				
22				
23				
24				

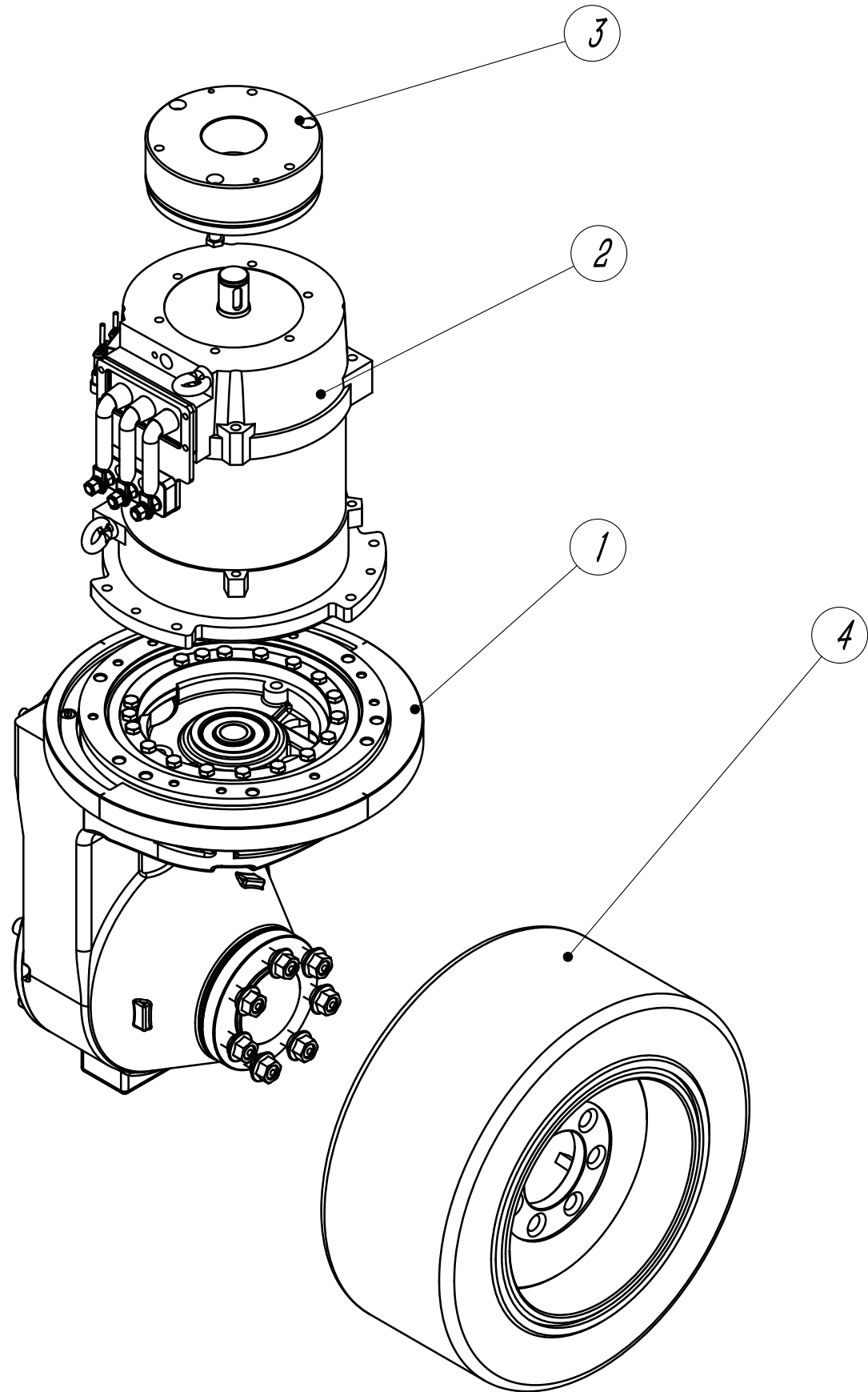
Fig.3-4 MQC30.3.5 Lift solenoid valve assembly

Suitable for MQC35 model



No.	Code	Name	Qty.	Remark
1	MQD30.3.7.1	Lift solenoid valve group	1	
2	S1CG9-22-080GDQ	Right Angle pipe joint	1	
3	S1CG-14-04	Barrel connector	6	
4	S1CG-22-08DQ	Barrel connector	1	
5	GB5783 M8×25	Hexagon headed bolt	4	
6	GJT209L	Right Angle pipe joint	1	
7	S2C9-14W	Internal and external threaded conversion 90° connector	2	
8				
9				
10				
11				
12				
13				
14				
15				
16				
17				
18				
19				
20				
21				
22				
23				
24				

Fig.4-1 MQC35.4 Driving system

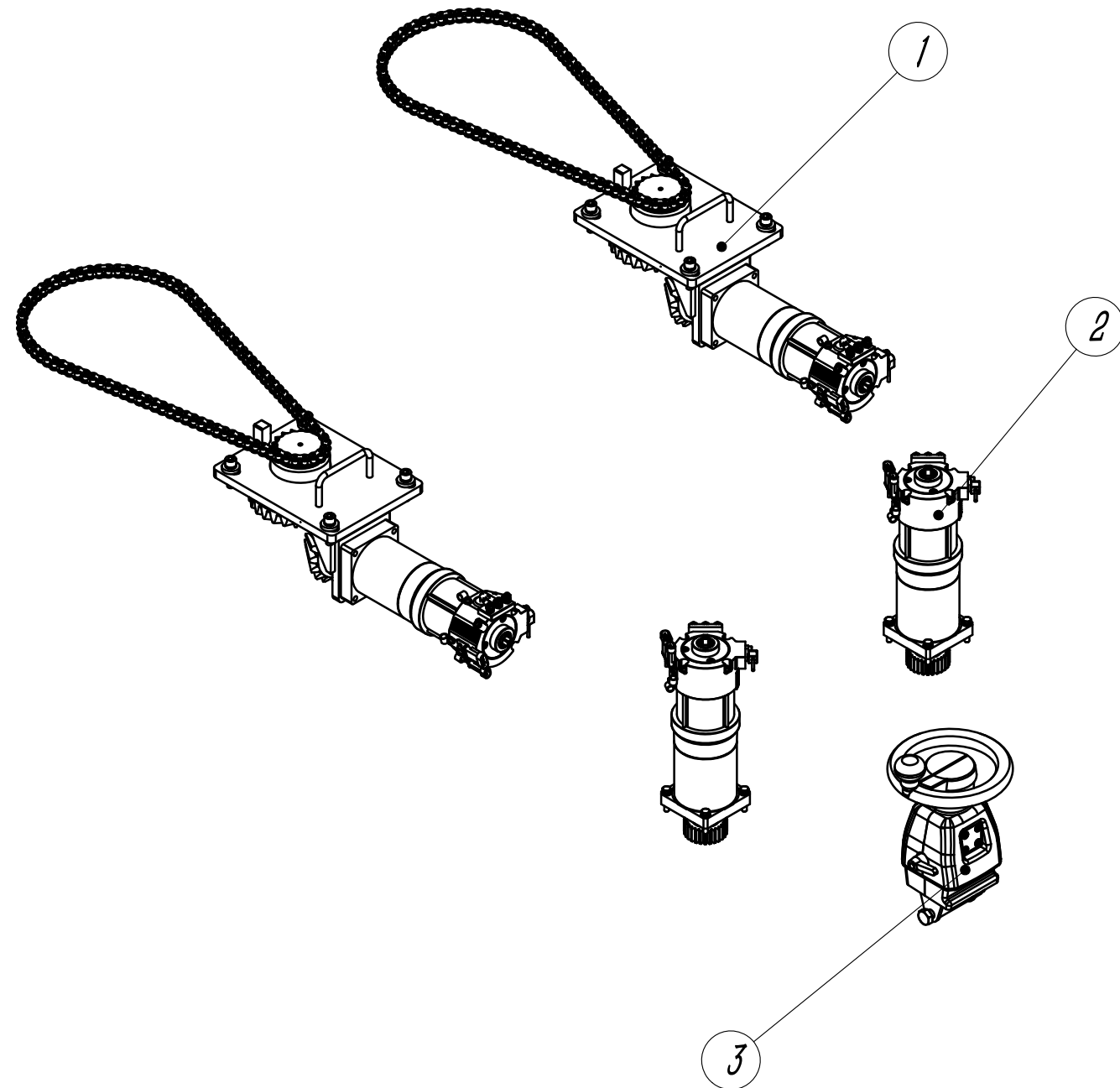


Suitable for MQC35 model

No.	Code	Name	Qty.	Remark
1	BQD40003.1	Driving assembly	1	
2	XQJ8-BYT2	Driveing motor	1	
3	REB0514(45V28)PF-R	Magnetic brake	1	
4	16×7-10.5-TR-MQC35	Compact-type solid tire assembly		
5				
6				
7				
8				
9				
10				
11				
12				
13				
14				
15				
16				
17				
18				
19				
20				
21				
22				
23				
24				

Fig.5-1 MQC35.5 Steering system

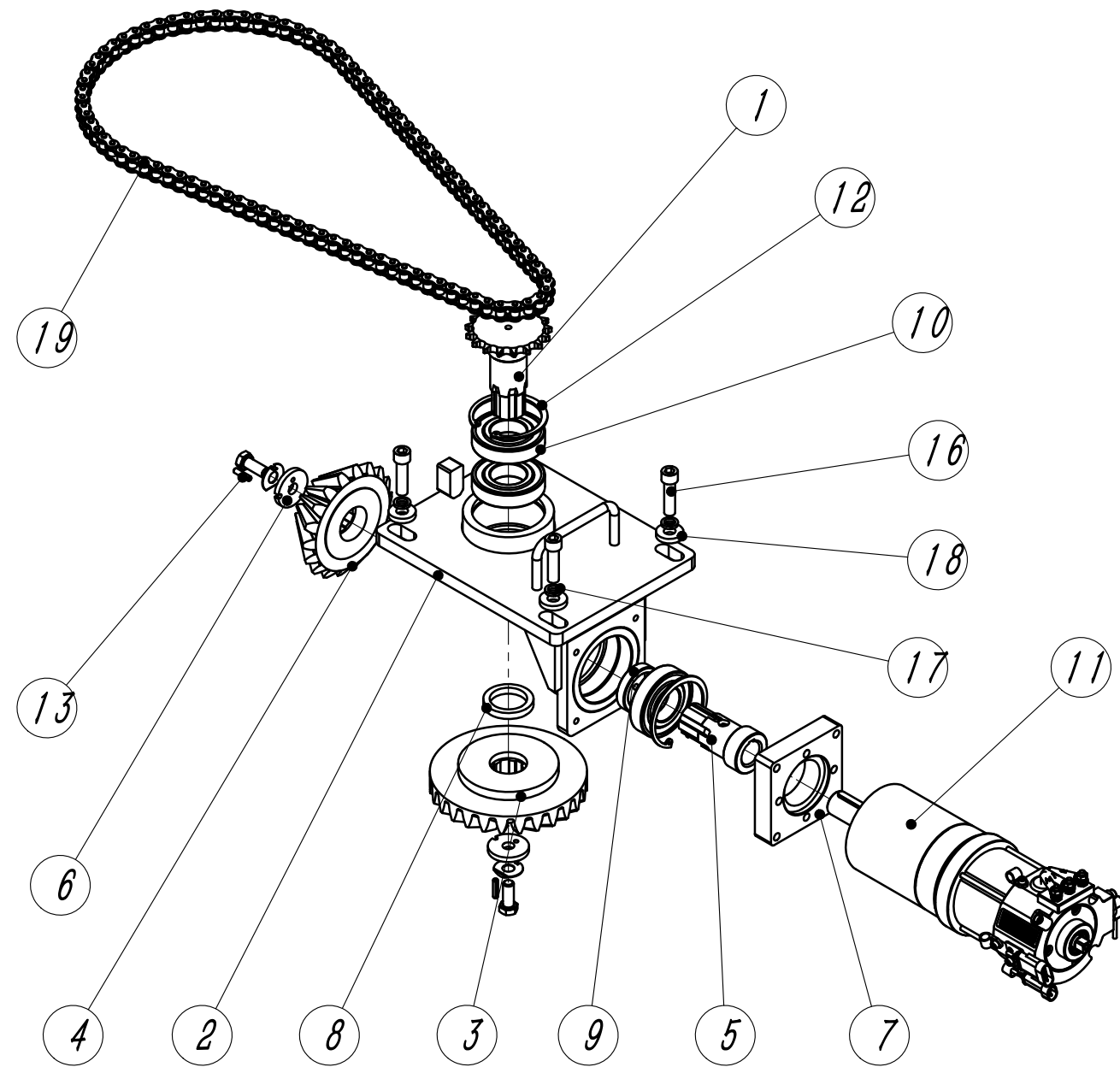
Suitable for MQC35 model



No.	Code	Name	Qty	Remark
1	MQC35.5.1	Front steering assembly	2	
2	MFZ25.5.4	Steering motor assembly	2	
3	MQC35.5.2	Steering wheel assembly	1	
4				
5				
6				
7				
8				
9				
10				
11				
12				
13				
14				
15				
16				
17				
18				
19				
20				
21				
22				
23				
24				

Fig.5-2 MQC35.5.1 Front steering assembly

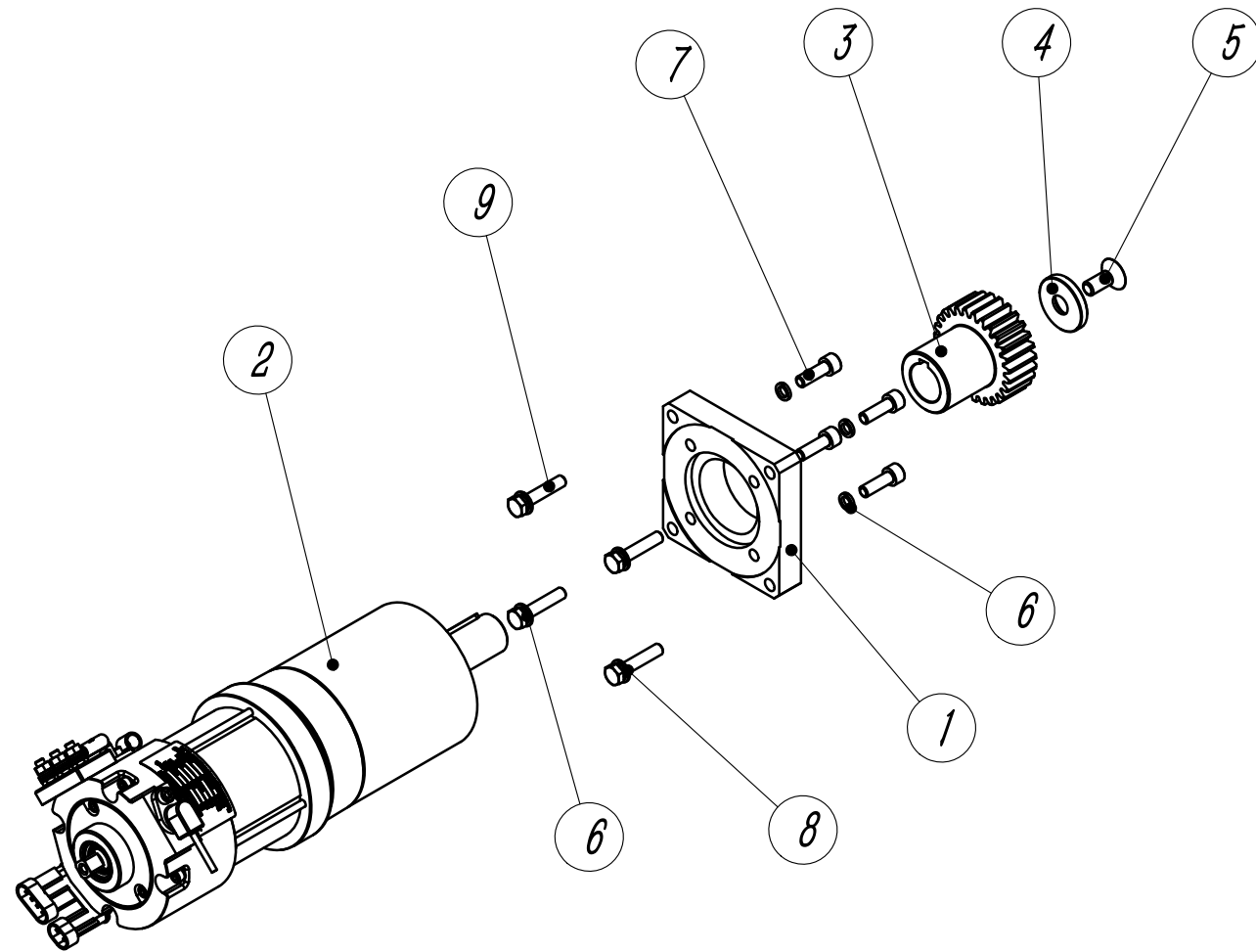
Suitable for MQC35 model



No.	Code	Name	Qty.	Remark
1	MQC35.5.1.1	Turn to the small chain wheel		
2	MFQ25.1.2.2.1	Front steering seat welding	1	
3	MFQ25.1.2.2.6	Large cone gear	1	
4	MFQ25.1.2.2.3	Bevel pinion	1	
5	MFQ25.1.2.2.5	Steering shaft	1	
6	MFQ25.1.2.2.7	Lock washer	2	
7	MF15.5.8.3	Motor connection plate	1	
8	GT415508	Across the set	1	
9	GT415512	Across the set	1	
10	GB276 6208-2Z	Deep groove ball bearing	3	
11	YDZ0.6-4-7970	Steering unit	1	
12	GB893.1 80	Circlip for hole	2	
13	GB879.1 5×24	Elastic cylindrical pin	2	
14	GB856 12	Outer tongue stops the gasket		
15	GB5786 M12×1.5×30	Hexagon headed bolt	2	
16	GB70.1 M12×45	Internal hexagon-cylindrical head screw	4	
17	GB93 12	Spring washer	4	
18	GT133006	Across the set	4	
19	10A-100	Steering chain	1	
20				
21				
22				
23				
24				

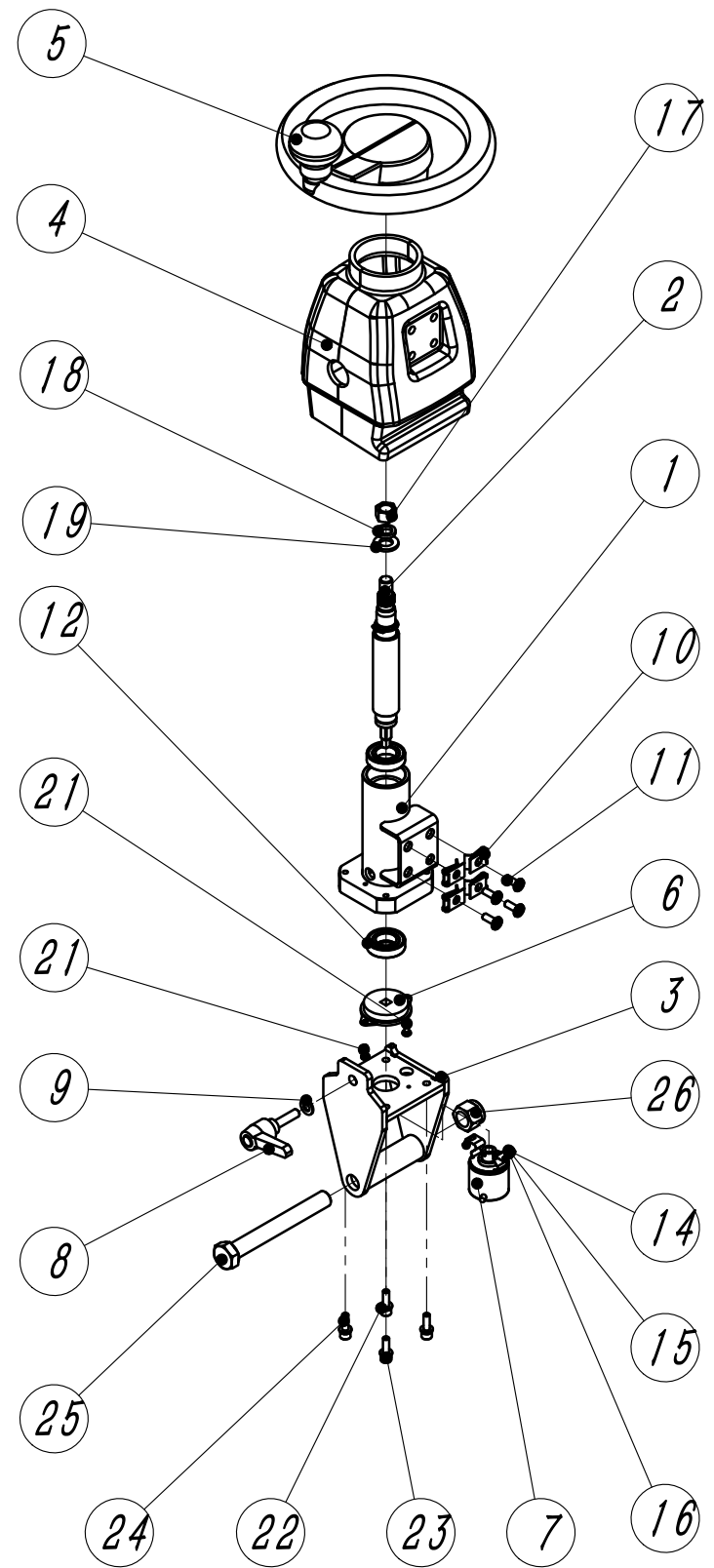
Fig.5-3 MFZ25.5.4 Steering motor assembly

Suitable for MQC35 model



No.	Code	Name	Qty	Remark
1	MFZ20.5.4.7	Transition plate	1	
2	YDZ0.6-4-7970	Steering unit	1	
3	MFZ25.5.4.8	Steering gear	1	
4	MFZ25.5.4.9	Gear plate	1	
5	GB70.3 M10×25	Hexalobular socket countersunk head screws		
6	GB93 8	Spring washer	8	
7	GB70.1 M8×25	Hexagon socket cap screws	4	
8	GB97.1 8	Flat washer	4	
9	GB5782 M8×40	Hexagon bolt	4	
10				
11				
12				
13				
14				
15				
16				
17				
18				
19				
20				
21				
22				
23				
24				

Fig.5-4 MQC35.5.2 Steering wheel assembly

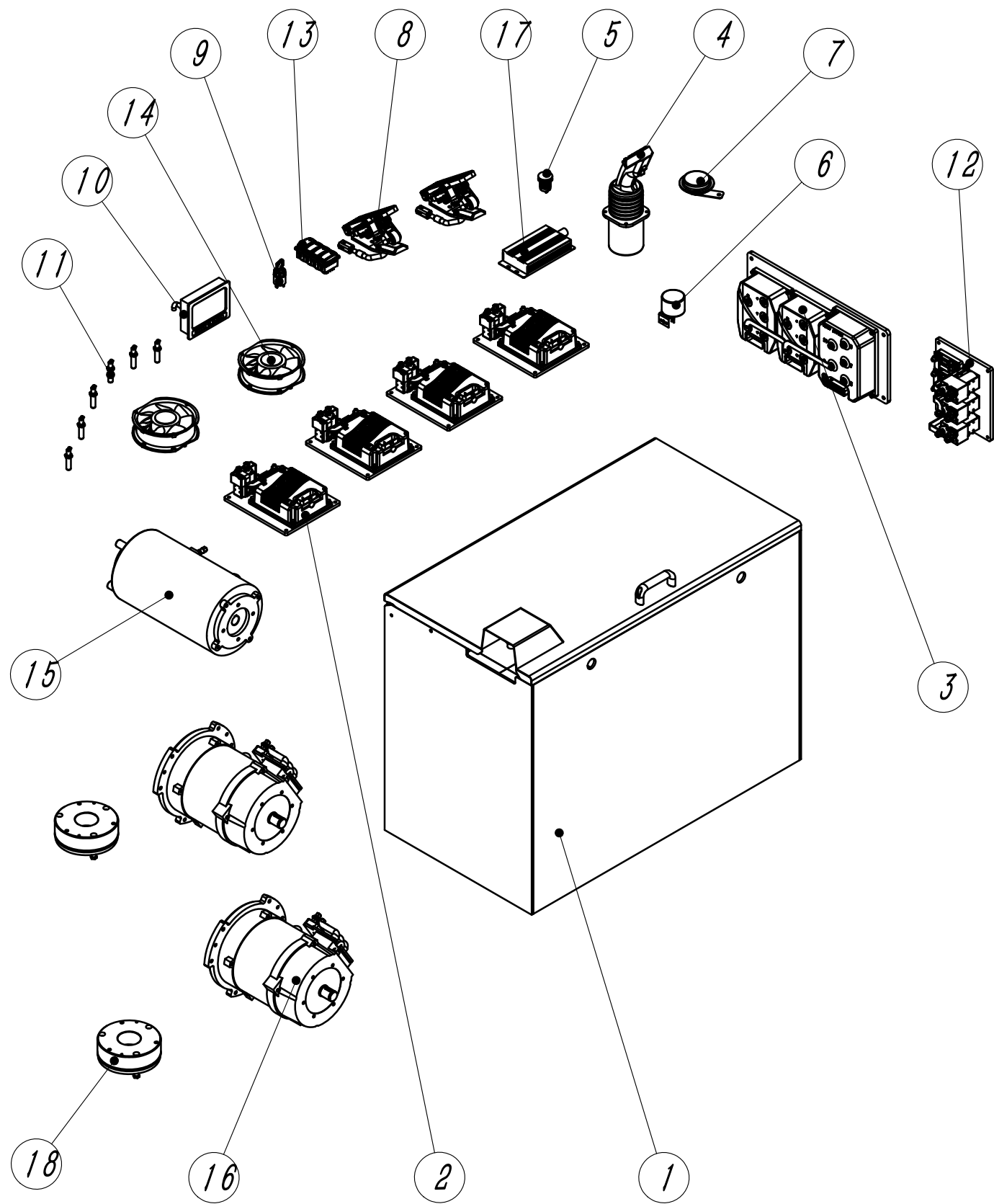


Suitable for MQC35 model

No	Code	Name	Qty	Remark
1	MQC35.5.2.1	Steering column welding	1	
2	MQC35.5.2.2	Steering shaft	1	
3	MQC35.5.2.3	Adjusting seat weld	1	
4	MQC35.5.2.4	Steering column housing assembly		
5	T550029480	Steering wheel	1	
6	YS-1005-48-F-0.2	Damper	1	
7	DBS36E-BBAK01000-1	Encoder assembly	1	
8	490934	Heavy duty adjusting handle	1	
9	GB97.1 8	Flat washer	1	
10	LP-133 M6	Reed nut	4	
11	DB-S M6×16	Inverted hexagon socket screw	4	
12	GB276 61904-2Z	Deep groove ball bearing	2	
13	GB894.1 20	Circlip for shaft	2	
14	GB97.1 3	Flat washer	2	
15	GB93 3	Spring washer	2	
16	GB818 M3×5	Cross recess head screw	2	
17	GB6170 M12	1 style hex nut	1	
18	GB93 12	Spring washer	1	
19	GB97.1 12	Flat washer	1	
20	GB93 4	Spring washer	2	
21	GB818 M4×12	Cross recess head screw	2	
22	GB97.1 6	Flat washer	4	
23	GB93 6	Spring washer	4	
24	GB70.1 M6×20	Hexagon socket cap screws	4	
25	GB5782 M16×130	Hexagon bolt	1	
26	GB889.1 M16	1 style hexagon lock nuts with non-metallic insert		

Fig.6-1 MQC35.7 Electric system

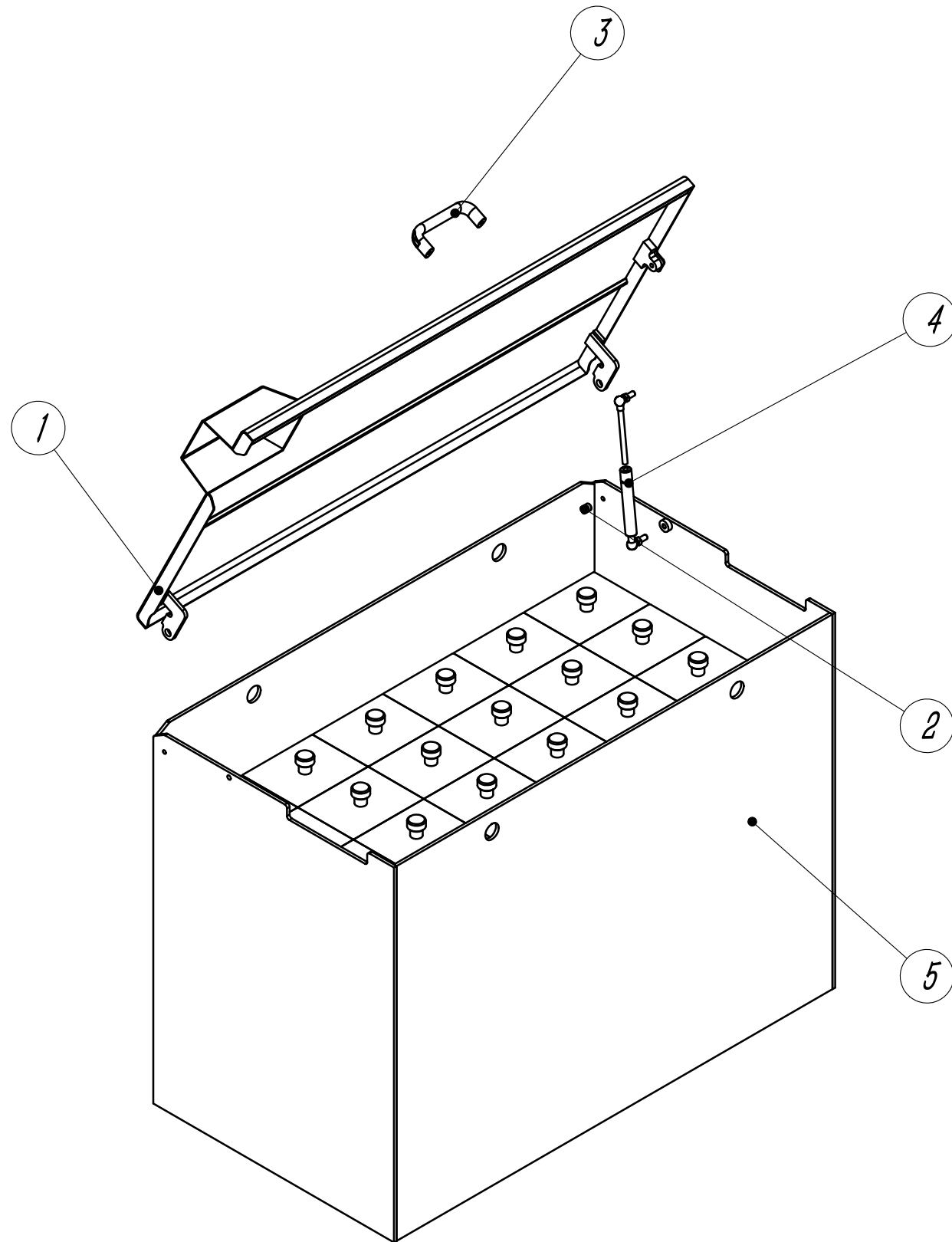
Suitable for MQC35 model



No.	Code	Name	Qty	Remark
1	MQC35.7.1	Battery assembly	1	
2	1222-5101-2	Control assembly	4	
3	1232SE-5321-7Q	Control assembly	1	
4	BV85R	Handle	1	
5	C832833B700	USB charger socket	1	
6	DJB-24B	Buzzer	1	
7	DL2280-24V	Horn	1	
8	FZ3-132-133	Accelerator-Comesys	2	
9	JK410	Ignition Switch	1	
10	JCP200-050A	Vehicle display screen	1	
11	IME12-04BPSZW2S	Proximity switch	6	
12	MQC35.7.2	Contactor assembly	1	
13	PCV-00000457	Quadruple switch	1	
14	YY17251H24B-ZC	Fan	2	
15	XQJ15-BYT5	Lifting motor	1	
16	XQJ8-BYT2	Drive motor	2	
17	ZB030048024TA-BYT	DC transverter	1	
18	REB0514(45V28)PF-R	Electromagnetic brake	2	
19				
20				
21				
22				
23				
24				

Fig.6-2 MQC35 .7.1 Battery assembly

Suitable for MQC35 model



No.	Code	Name	Qty	Remark
1	MQC35.7.1.2	Battery cover plate welded	1	
2	GT091213	Spacer bush	2	
3	M.643FM-140B-6	Hand shank	1	
4	BQTH160	Gas spring	1	
5	QDC48-560-7	Traction battery	1	
6				
7				
8				
9				
10				
11				
12				
13				
14				
15				
16				
17				
18				
19				
20				
21				
22				
23				
24				